



World Tourism Barometer

Statistical Annex

Volume 19 • Issue 2 • March 2021

The following pages contain detailed tables on tourism related indicators such as international tourist arrivals, international tourism receipts and expenditure collected by UNWTO from national institutions.

Tables reflect yearly data and monthly or quarterly data currently available. Most data are preliminary and may be subject to revision. See the Methodological Notes at the end of this annex for further information on the data.

The tables on the following pages are not included in the free extract of the UNWTO World Tourism Barometer. The full document is available in electronic format for sale and free for UNWTO members and subscribers through the UNWTO elibrary at:

- English version: www.e-unwto.org/content/w83v37
- French version: www.e-unwto.org/content/t73863
- Spanish version: www.e-unwto.org/content/rn1422
- Russian version: www.e-unwto.org/content/j62835

Contents

- International Tourist Arrivals by (Sub)region and Outlook	A-3
- International Tourist Arrivals and Tourism Receipts (local currencies, constant prices), World and Regions	A-4
- International Tourist Arrivals by Destination (Top 50)	A-6
- International Tourism Receipts in US\$ (Top 50)	A-7
- International Tourism Receipts in euro (Top 50)	A-8
- International Tourism Expenditure in US\$ (Top 50)	A-9
- International Tourism Expenditure in euro (Top 50)	A-10
- Detailed tables by UNWTO regions and subregions:	
International Tourist Arrivals and Tourism Receipts	
• Europe	A-11
• Asia and the Pacific	A-13
• Americas	A-15
• Africa	A-17
• Middle East	A-19
- Methodological Notes	A-20

Explanation of abbreviations and symbols used

- * = provisional figure or data
- | = change of series or methodology
- .. = figure or data not (yet) available
- n/a = not applicable

mn = million (1,000,000)

bn = billion (1,000,000,000) [note in Spanish 'miles de millones']

trn = trillion (1,000,000,000,000) [note in Spanish 'billones']

Q1: January, February, March

T1: From January to April

Q2: April, May, June

T2: From May to August

Q3: July, August, September

T3: From Sept. to December

Q4: October, November, December

H1: from January to June

H2: from July to December

YTD: Year-to-date refers to the change in the months with data available, compared to the same period of the previous year. The (sub)regional totals are approximations for the whole (sub)region based on trends in countries for which data is available.

Series of International Tourist Arrivals

TF: International tourist arrivals (ITA) at frontiers (excluding same-day visitors);

THS: ITA at hotels and similar establishments;

TCE: ITA at collective tourism establishments;

VF: International visitor arrivals at frontiers (tourists and same-day visitors);

NHS: Nights of international tourists in hotels and similar establishments;

NCE: Nights of international tourists in collective tourism establishments.

Shaded rank numbers (■) indicate an upward movement in the destination's place in the ranking over the previous year.

Series of International Tourism Receipts and Expenditure

All percentages are calculated from non-seasonally adjusted series in local currencies, unless otherwise indicated:

\$: in US dollars; **€** in euros; **sa**: seasonally-adjusted series.

For more on concepts, definitions and computation of data, please see the Methodological Notes on page A-24.



The World Tourism Organization (UNWTO) is the United Nations specialized agency mandated with the promotion of responsible, sustainable and universally accessible tourism.

UNWTO's membership includes 159 countries, 6 Associate Members, two Permanent Observers, and over 500 Affiliate Members representing the private sector, educational institutions, tourism associations and local tourism authorities.

Copyright © 2021 World Tourism Organization
C/ Poeta Joan Maragall 42, 28020 Madrid, Spain

UNWTO World Tourism Barometer

ISSN: 1728-9246

Published and printed by the World Tourism Organization, Madrid, Spain - First printing: 2021 (version 01/04/21)
All rights reserved.

The designations employed and the presentation of material in this publication do not imply the expression of any opinions whatsoever on the part of the Secretariat of the World Tourism Organization (UNWTO) concerning the legal status of any country, territory, city or area, or of its authorities or concerning the delimitation of its frontiers or boundaries.

All UNWTO publications are protected by copyright. Therefore and unless otherwise specified, no part of a UNWTO publication may be reproduced, stored in a retrieval system or utilized in any form or by any means, electronic or mechanical, including photocopying, microfilm, scanning, without prior permission in writing. UNWTO encourages dissemination of its work and is pleased to consider permissions, licensing, and translation requests related to UNWTO publications. For permission to photocopy UNWTO material, please refer to the UNWTO website at www.unwto.org/publications.

The contents of this issue may be quoted, provided the source is given accurately and clearly. Distribution or reproduction in full is permitted for own or internal use only. Please do not post electronic copies on publicly accessible websites. UNWTO encourages you to include a link to www.unwto.org/market-intelligence.

World Tourism Organization

C/ Poeta Joan Maragall 42, 28020 Madrid, Spain
Tel (34) 91 567 81 00 / Fax (34) 91 131 17 02
info@unwto.org
www.unwto.org

Follow us on:      

About the *UNWTO World Tourism Barometer*

The *UNWTO World Tourism Barometer* is a publication of the World Tourism Organization (UNWTO) that monitors short-term tourism trends on a regular basis to provide global tourism stakeholders with up-to-date analysis on international tourism.

The information is updated several times a year and includes an analysis of the latest data on tourism destinations (inbound tourism) and source markets (outbound tourism). The Barometer also includes three times a year a Confidence Index based on the UNWTO Panel of Tourism Experts survey, which provides an evaluation of recent performance and short-term prospects on international tourism.

The UNWTO Secretariat wishes to express its gratitude to those who have contributed to the production of this *UNWTO World Tourism Barometer*, in particular to institutions that supplied data, and to the members of the UNWTO Panel of Tourism Experts for their valuable feedback and analysis.

This report was prepared by the **UNWTO Tourism Market Intelligence and Competitiveness Department**, under the supervision of Sandra Carvão, Chief of the Department. Authors include (in alphabetical order): Fernando Alonso, Michel Julian, and Javier Ruescas.

For more information including copies of previous issues, please visit: www.e-unwto.org/loi/wtobarometereng.

We welcome your comments and suggestions at barom@unwto.org.

Data collection for this issue was closed at the end of March 2021.

The next issue of the *UNWTO World Tourism Barometer* with more comprehensive results is scheduled to be published in May 2021.

International Tourist Arrivals by (Sub)region

	Monthly/quarterly data series														
	(million)			Share (%)	Change		% change over same period of the previous year								
					Change (%)		2021*			2020*					
	2018	2019	2020*	2020*	19/18	20*/19	YTD	Jan.	Q1	Q2	Q3	Q4	Oct.	Nov.	Dec.
World	1,413	1,466	394	100	3.8	-73.1	-86.7	-86.7	-28.0	-94.3	-77.6	-84.8	-82.5	-86.7	-85.7
Advanced economies ¹	761	777	211	53.5	2.1	-72.9	-89.6	-89.6	-30.5	-93.9	-73.6	-87.4	-83.1	-90.2	-90.1
Emerging economies ¹	651	689	183	46.5	5.7	-73.4	-84.1	-84.1	-25.7	-94.9	-83.0	-82.3	-81.8	-83.4	-81.7
<i>By UNWTO regions:</i>															
Europe	716.0	746.3	231.8	58.9	4.2	-68.9	-85.1	-85.1	-21.5	-92.8	-67.9	-82.0	-76.6	-85.5	-85.9
Northern Europe	81.0	83.7	20.6	5.2	3.3	-75.4	-92.2	-92.2	-18.2	-95.1	-81.2	-89.2	-83.6	-91.2	-93.6
Western Europe	200.2	205.4	78.6	20.0	2.6	-61.7	-91.1	-91.1	-22.1	-89.6	-58.0	-86.1	-78.2	-89.9	-91.7
Central/Eastern Eur.	146.2	153.3	44.8	11.4	4.8	-70.8	-78.3	-78.3	-17.6	-94.3	-73.1	-81.1	-79.5	-81.9	-81.9
Southern/Medit. Eur.	288.6	303.9	87.9	22.3	5.3	-71.1	-81.5	-81.5	-24.7	-93.5	-68.7	-77.2	-72.7	-82.3	-80.3
- of which EU-27	523.8	540.7	176.2	44.7	3.2	-67.4	-86.0	-86.0	-23.1	-91.7	-64.1	-82.9	-77.2	-86.9	-87.1
Asia and the Pacific	346.5	360.4	57.1	14.5	4.0	-84.2	-95.9	-95.9	-46.9	-98.7	-96.9	-95.4	-95.6	-95.4	-95.3
North-East Asia	169.2	170.3	20.2	5.1	0.7	-88.1	-94.0	-94.0	-65.1	-98.9	-95.7	-92.9	-93.4	-92.5	-92.6
South-East Asia	128.6	138.6	25.5	6.5	7.8	-81.6	-98.1	-98.1	-34.0	-98.2	-98.1	-98.0	-98.0	-97.9	-98.0
Oceania	17.0	17.5	3.6	0.9	2.4	-79.4	-98.3	-98.3	-25.4	-99.2	-98.6	-98.5	-98.2	-98.5	-98.7
South Asia	31.7	34.0	7.8	2.0	7.5	-77.0	-93.0	-93.0	-22.2	-98.8	-96.8	-95.3	-95.2	-96.8	-94.1
Americas	216.0	219.3	68.3	17.4	1.5	-68.8	-76.9	-76.9	-16.9	-92.7	-86.2	-76.5	-79.4	-76.6	-73.9
North America	142.2	146.6	46.7	11.9	3.1	-68.1	-71.3	-71.3	-14.7	-90.3	-84.2	-72.9	-76.1	-72.3	-70.5
Caribbean	25.8	26.3	8.9	2.3	1.9	-66.0	-75.7	-75.7	-23.6	-96.6	-79.6	-72.1	-74.1	-76.0	-67.7
Central America	10.8	10.9	2.9	0.7	0.8	-73.1	-80.2	-80.2	-17.5	-98.2	-98.8	-86.8	-93.6	-85.7	-83.4
South America	37.2	35.4	9.7	2.5	-4.7	-72.5	-92.1	-92.1	-18.2	-98.9	-97.5	-90.9	-94.2	-92.1	-87.7
Africa	68.7	70.0	18.4	4.7	2.0	-73.7	-84.8	-84.8	-13.1	-90.6	-86.6	-78.3	-80.9	-79.7	-74.7
North Africa	24.1	25.6	5.5	1.4	6.4	-78.4	-79.7	-79.7	-20.4	-99.3	-91.8	-83.8	-86.6	-86.7	-78.7
Subsaharan Africa	44.6	44.4	12.9	3.3	-0.4	-71.1	-86.9	-86.9	-9.8	-85.3	-82.2	-75.4	-77.7	-76.4	-72.7
Middle East	65.5	70.0	18.2	4.6	6.8	-74.0	-83.6	-83.6	-20.0	-98.9	-92.9	-85.7	-86.9	-85.7	-84.7

Source: World Tourism Organization (UNWTO) ©

(Data as collected by UNWTO, March 2021)

* Provisional data

¹ Classification based on the International Monetary Fund (IMF), see the Statistical Annex of the IMF World Economic Outlook of April 2017, page 175, at www.imf.org/external/ns/cs.aspx?id=29.

See box in page 'Annex-1' for explanation of abbreviations and symbols used

International Tourism by (Sub)region

	International Tourism Receipts										International Tourist Arrivals				
	Change (%)			USD		per	EUR		per	Share	Change		Share		
	Local currencies, constant prices			(billion)		arrival	(billion)		arrival	(%)	(million)		(%)	(%)	
	17/16	18/17	19*/18	2018	2019*	2019*	2018	2019*	2019*	2019*	2018	2019*	18/17	19*/18	2019*
World	4.8	5.0	3.0	1,439	1,466	1,000	1,219	1,310	890	100	1,413	1,466	5.7	3.8	100
Advanced economies ¹	3.4	4.1	1.3	927	922	1,190	785	823	1,060	62.9	761	777	4.1	2.1	53.0
Emerging economies ¹	7.4	6.6	6.1	512	545	790	434	486	710	37.1	651	689	7.7	5.7	47.0
<i>By UNWTO regions:</i>															
Europe	6.9	4.9	4.3	569.2	572.2	770	482.0	511.1	680	39.0	716.0	746.3	5.8	4.2	50.9
Northern Europe	3.5	0.5	5.0	88.7	89.6	1,070	75.1	80.0	960	6.1	81.0	83.7	0.0	3.3	5.7
Western Europe	3.2	3.4	1.8	182.9	179.6	870	154.9	160.4	780	12.2	200.2	205.4	3.9	2.6	14.0
Central/Eastern Europe	7.5	8.4	1.6	69.0	68.7	450	58.4	61.4	400	4.7	146.2	153.3	8.4	4.8	10.5
Southern/Medit. Europe	11.3	6.7	6.8	228.6	234.3	770	193.6	209.3	690	16.0	288.6	303.9	7.7	5.3	20.7
- of which EU-27	6.8	3.8	3.4	427.9	423.7	780	362.3	378.5	700	28.9	523.8	540.7	4.6	3.2	36.9
Asia and the Pacific	4.4	8.5	1.2	435.2	442.1	1,230	368.5	394.9	1,100	30.2	346.5	360.4	7.2	4.0	24.6
North-East Asia	-1.1	11.5	-3.5	193.3	187.3	1,100	163.7	167.3	980	12.8	169.2	170.3	6.1	0.7	11.6
South-East Asia	9.2	5.5	4.3	138.2	147.6	1,070	117.1	131.8	950	10.1	128.6	138.6	6.7	7.8	9.5
Oceania	6.1	6.8	5.6	61.1	61.6	3,530	51.8	55.0	3,150	4.2	17.0	17.5	2.9	2.4	1.2
South Asia	14.0	7.7	6.2	42.5	45.6	1,340	36.0	40.7	1,200	3.1	31.7	34.0	18.8	7.5	2.3
Americas	0.1	0.4	-0.6	320.9	322.6	1,470	271.7	288.2	1,310	22.0	216.0	219.3	2.4	1.5	15.0
North America	-0.4	-0.1	-1.7	245.9	245.9	1,680	208.2	219.7	1,500	16.8	142.2	146.6	3.5	3.1	10.0
Caribbean	1.8	2.1	6.1	33.0	35.3	1,340	28.0	31.5	1,200	2.4	25.8	26.3	0.1	1.9	1.8
Central America	4.0	1.2	2.9	12.2	12.6	1,160	10.4	11.3	1,030	0.9	10.8	10.9	-2.2	0.8	0.7
South America	0.7	2.8	-0.5	29.8	28.8	810	25.2	25.7	730	2.0	37.2	35.4	1.5	-4.7	2.4
Africa	8.0	2.8	2.6	38.8	39.0	560	32.8	34.9	500	2.7	68.7	70.0	7.9	2.0	4.8
North Africa	9.3	4.7	7.0	10.7	11.2	440	9.1	10.0	390	0.8	24.1	25.6	11.1	6.4	1.7
Subsaharan Africa	7.5	2.1	1.0	28.0	27.8	630	23.7	24.8	560	1.9	44.6	44.4	6.2	-0.4	3.0
Middle East	12.6	8.0	19.6	75.2	90.4	1,290	63.7	80.8	1,150	6.2	65.5	70.0	5.2	6.8	4.8

Source: World Tourism Organization (UNWTO) ©

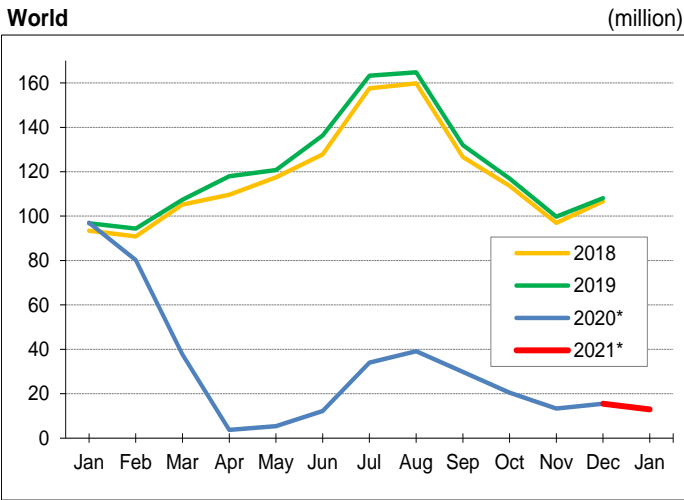
(Data as collected by UNWTO, March 2021)

* Provisional data

¹ Classification based on the International Monetary Fund (IMF), see the Statistical Annex of the IMF World Economic Outlook of April 2017, page 175, at www.imf.org/external/ns/cs.aspx?id=29.

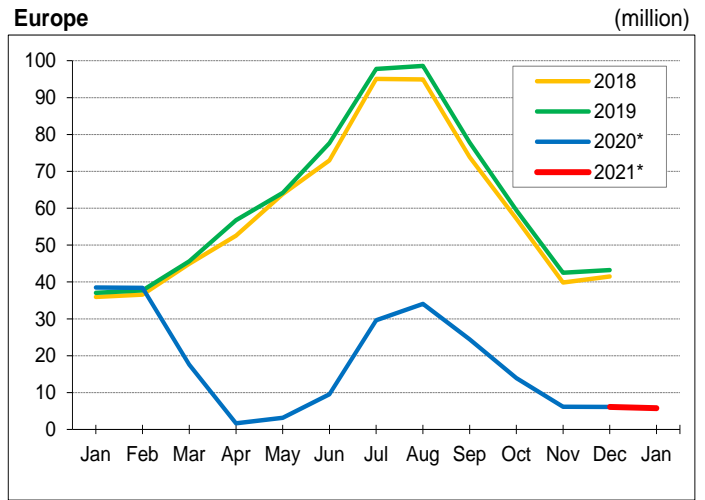
See box in page 'Annex-1' for explanation of abbreviations and symbols used

International Tourist Arrivals by month



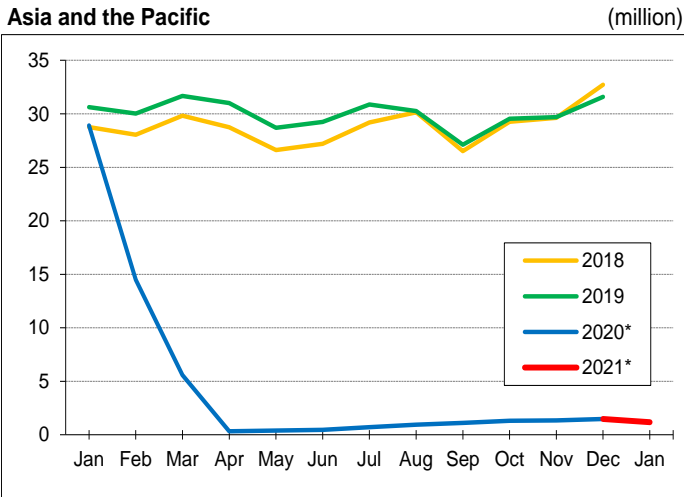
Source: World Tourism Organization (UNWTO) ©

International Tourist Arrivals by month



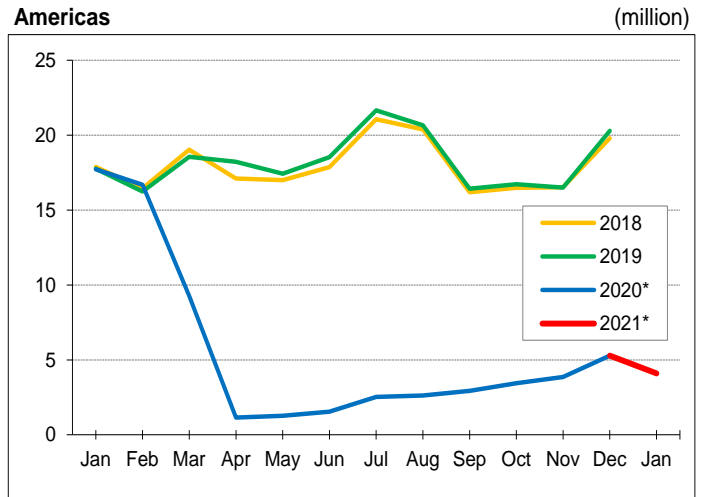
Source: World Tourism Organization (UNWTO) ©

International Tourist Arrivals by month



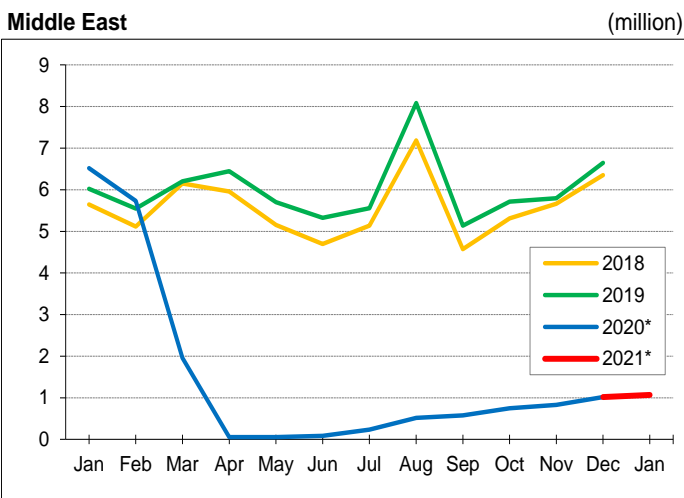
Source: World Tourism Organization (UNWTO) ©

International Tourist Arrivals by month



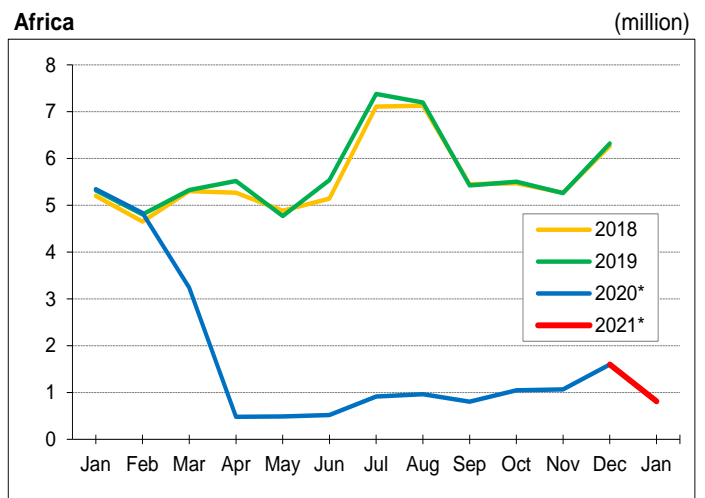
Source: World Tourism Organization (UNWTO) ©

International Tourist Arrivals by month



Source: World Tourism Organization (UNWTO) ©

International Tourist Arrivals by month



Source: World Tourism Organization (UNWTO) ©

International Tourist Arrivals by Country of Destination

Rank '19 '18	Series	(million)		Change (%)		Percentage change over same period of previous year											
		2018	2019	2020*	19/18	20*/19	2021*			2020*							
		YTD	Jan.	Feb.	Q1	Q2	Q3	Q4	Oct.	Nov.	Dec.						
World		1413	1466	394	3.8	-73.1		-86.7	-86.7		-28.0	-94.3	-77.6	-84.8	-82.5	-86.7	-85.7
1 1 France	TF	89.4	TCE										
2 2 Spain	TF	82.8	83.5	19.0	0.8	-77.3	TF	-89.5	-89.5		-25.7	-99.1	-79.0	-87.2	-86.6	-90.2	-84.9
3 3 United States	TF	79.7	79.4	19.4	-0.4	-75.5	TF				-19.0	-95.8	-91.6	-85.8	-88.8	-85.1	-83.4
4 4 China	TF	62.9	65.7	..	4.5	..	TF				-68.4	-98.1	-92.4		-91.7	-91.0	
5 5 Italy	TF	61.6	64.5	25.4	4.8	-60.7	TF				-34.4	-81.4	-48.9	-74.2	-65.8	-80.0	-80.9
6 6 Turkey	TF	45.8	51.2	15.9	11.9	-69.0	TF	-71.4	-71.4		-22.2	-97.9	-72.7	-61.6	-59.0	-61.5	-67.1
7 7 Mexico	TF	41.3	45.0	24.3	9.0	-46.0	TF	-49.3	-49.3		-6.7	-75.9	-57.5	-44.5	-43.7	-45.6	-44.3
8 10 Thailand	TF	38.2	39.9	6.7	4.4	-83.2	TF	-99.8	-99.8	-99.7	-38.0	-100.0	-100.0	-99.9	-100.0	-99.9	-99.8
9 8 Germany	TCE	38.9	39.6	12.4	1.8	-68.5	TCE	-92.3	-92.3		-25.0	-91.7	-61.5	-86.9	-77.0	-91.8	-94.0
10 9 United Kingdom	TF	38.7	39.4	..	1.9	..	VF				-16.1	-96.2					
11 12 Austria	TCE	30.8	31.9	15.1	3.5	-52.7	TCE	-98.5	-98.5	-98.5	-15.2	-88.9	-39.2	-90.2	-76.1	-94.9	-98.4
12 11 Japan	VF	31.2	31.9	4.1	2.2	-87.1	VF	-98.6	-98.3	-99.3	-51.1	-99.9	-99.7	-98.1	-98.9	-97.7	-97.7
13 13 Greece	TF	30.1	31.3	7.2	4.1	-77.0	TF	-87.9	-87.9		-5.6	-95.3	-77.4	-75.7	-65.6	-98.0	-86.0
14 15 Malaysia	TF	25.8	26.1	4.3	1.0	-83.4	TF				-36.8	-99.7	-99.3	-99.4	-99.4	-99.4	-99.5
15 17 Portugal	TF	22.8	24.6	..	7.9	..	TCE				-21.9	-98.2	-76.0	-82.8	-78.3	-88.4	-85.3
16 16 Russian Federation	VF	24.6	24.6	..	0.2	..	VF				-21.6						
17 14 Hong Kong (China)	TF	29.3	23.8	1.4	-18.8	-94.3	TF	-99.6	-99.6		-83.5	-99.6	-99.3	-99.5	-99.4	-99.5	-99.6
18 19 Canada	TF	21.1	22.1	3.0	4.8	-86.6	TF	-93.8	-93.8		-19.6	-98.3	-97.5	-94.9	-96.2	-94.3	-94.0
19 18 Utd Arab Emirates	TF	21.3	21.6	7.2	1.3	-66.8	TF	-73.5	-74.2	-72.7	-12.3	-99.0	-89.9	-72.6	-74.9	-74.5	-69.0
20 20 Poland	TF	19.6	21.2	8.4	7.8	-60.2	TF				-16.1	-91.0	-51.4	-75.5	-69.2	-78.3	-79.8
21 21 Netherlands	TCE	18.8	20.1	7.3	7.2	-63.6	TCE				-23.4	-86.9	-47.9	-87.3	-84.2	-89.7	-89.4
22 22 Macao (China)	TF	18.5	18.6	2.8	0.8	-84.9	TF	-63.1	-79.6	225.8	-67.9	-99.5	-94.7	-76.5	-79.1	-77.0	-73.6
23 26 Vietnam	VF	15.5	18.0	3.8	16.2	-78.7	VF	-99.1	-99.1	-99.1	-18.1	-98.6	-99.0	-99.1	-99.1	-99.0	-99.0
24 23 India	TF	17.4	17.9	..	2.8	..	TF				-22.6	-100.0					
25 28 Saudi Arabia	TF	15.3	17.5	4.1	14.3	-76.4	TF	-89.2	-88.2	-90.3	-28.1	-98.2	-95.3	-88.9	-87.0	-87.1	-91.5
26 27 Korea (ROK)	VF	15.3	17.5	2.5	14.0	-85.6	VF				-46.9	-97.9	-95.7	-95.9	-96.3	-95.8	-95.7
27 25 Croatia	TCE	16.6	17.4	5.5	4.3	-68.0	TCE	-86.6	-86.6		-41.6	-86.4	-57.9	-90.2	-90.1	-87.4	-93.4
28 24 Hungary	TF	17.2	16.9	6.8	-1.3	-59.7	TF				-15.1	-100.0	-55.6	-61.8			
29 32 Indonesia	TF	13.4	15.5	..	15.4	..	VF	-89.1	-89.1		-30.1	-87.9	-89.2	-87.7	-88.6	-86.3	-88.1
30 29 Singapore	TF	14.7	15.1	..	3.0	..	VF	-98.3	-98.6	-97.6	-43.2	-99.9	-99.5	-98.9	-99.1	-99.0	-98.6
31 33 Denmark	TF	12.7	14.6	..	14.3	..	TCE	-88.5	-88.5		-22.5	-92.8	-65.6	-82.5	-76.2	-85.8	-87.8
32 30 Czech Republic	TF	14.3	TCE				-25.0	-95.7	-68.6	-96.0	-94.4	-97.1	-96.8
33 31 Ukraine	TF	14.2	13.4	..	-5.4	..	TF				-19.5	-94.8	-86.7	-76.4			
34 36 Egypt	VF	11.3	13.0	..	14.8	..	VF				-19.6	-99.8					
35 34 Morocco	TF	12.3	12.9	2.8	5.2	-78.5	TF				-21.6	-99.7	-94.9	-79.8	-83.4	-82.6	-73.9
36 37 Taiwan (pr. of China)	VF	11.1	11.9	1.4	7.2	-88.4	VF	-97.7	-98.2	-96.5	-57.0	-99.6	-98.1	-98.0	-98.0	-97.9	-98.1
37 35 Switzerland	TF	11.7	11.8	..	0.9	..	THS	-84.2	-84.2		-26.4	-94.4	-70.3	-83.9	-82.3	-87.4	-83.0
38 38 Ireland	TF	10.9	11.0	..	0.2	..	TF										
39 39 South Africa	TF	10.5	10.2	2.8	-2.3	-72.6	TF				-10.2	-100.0	-100.0	-86.0	-91.1	-88.1	-79.8
40 41 Australia	VF	9.2	9.5	1.8	2.4	-80.7	VF	-99.0	-99.0		-28.5	-99.5	-99.5	-99.2	-99.2	-99.1	-99.2
41 43 Tunisia	TF	8.3	9.4	2.0	13.6	-78.7	TF	-80.8	-75.6	-85.8	-17.1	-99.1	-87.8	-87.5	-90.2	-91.0	-82.9
42 42 Belgium	TCE	9.1	9.3	..	2.5	..	TCE				-22.5	-94.6	-65.7		-86.3	-93.0	
43 40 Bulgaria	TF	9.3	9.3	..	0.4	..	VF	-60.0	-60.0		-10.5	-81.9	-64.6	-53.7	-45.3	-53.5	-63.3
44 45 Iran	VF	7.3	9.1	..	24.4	..	VF				-15.8	-96.1	-94.5		-92.2		
45 47 Kyrgyzstan	VF	6.9	8.5	..	22.5										
46 46 Philippines	TF	7.2	8.3	1.5	15.2	-82.1	TF				-36.6	-99.6	-98.3	-97.9	-98.4	-98.0	-97.5
47 44 Sweden	TCE	7.4	7.6	..	2.4	..	TCE	-80.3	-80.3		-25.5	-88.5	-81.8	-72.9	-63.2	-78.8	-79.3
48 48 Argentina	TF	6.9	7.4	2.1	6.6	-71.8	TF	-97.5	-97.5		-8.9	-100.0	-99.5	-98.3	-99.1	-98.4	-97.7
49 55 Uzbekistan	VF	5.3	6.7	..	26.2	..	VF				-12.0	-99.9	-92.7				
50 51 Cambodia	TF	6.2	6.6	1.3	6.6	-80.2	TF				-38.5	-98.1	-95.6	-96.7	-95.8	-97.0	-97.2

Source: World Tourism Organization (UNWTO) ©

(Data as collected by UNWTO, March 2021)

See box in page 'Annex-1' for explanation of abbreviations and signs used, and corresponding notes in the tables of the regions

International Tourism Receipts (USD billion)

Rank	'19 '18	(USD billion)			Local currencies, current prices (% change over same period of previous year)														
		2017	2018	2019*	Change (%)		2020*												
					18/17	19*/18	YTD	Q1	Q2	Q3	Jul.	Aug.	Sep.	Oct.	Nov.	Dec.			
	World	1,328	1,439	1,466															
1	1 United States	193.8	196.5	193.3	sa	1.4	-1.6	-62.9	-27.1	-73.9	-77.3	-76.8	-78.0	-77.1	-75.9	-72.9	-71.7		
2	2 Spain	75.3	81.7	79.7		3.7	2.9	-77.4	-23.5	-99.2	-80.0	-77.2	-76.9	-87.2	-87.5	-90.0	-84.5		
3	3 France	58.9	66.0	63.8		7.3	1.9	-49.8	-18.0	-72.5	-44.9	-45.2	-39.8	-50.9	-50.6	-63.0	-50.5		
4	4 Thailand	52.4	56.4	60.5		2.5	1.9	-70.0	-35.8	-88.2	-92.5								
5	5 United Kingdom	48.0	50.0	52.7		0.5	10.1	-60.3	-18.0	-71.1	-72.6								
6	6 Italy	44.2	49.3	49.6		6.5	6.2	-60.6	-34.8	-84.7	-45.5	-52.8	-40.2	-42.8	-70.4	-81.6	-81.2		
7	9 Japan	34.1	42.1	46.1		21.7	8.0	-77.1	-38.2	-90.3	-89.0	-90.3	-88.7	-87.7	-89.0	-87.4	-87.6		
8	7 Australia	41.7	45.0	45.7		10.7	9.1	-43.3	-19.1	-46.4	-55.2	-52.9	-57.4	-55.2	-54.6	-53.9	-55.4		
9	8 Germany	39.9	43.0	41.8		3.1	2.6	-48.2	-12.4	-71.4	-44.1	-50.5	-41.0	-40.3	-49.6	-60.7	-69.1		
10	10 Macao (China)	35.9	40.7	40.1		14.0	-1.6	-78.6	-61.3	-96.4	-92.1								
11	11 China	38.6	40.4	35.8		2.5	-7.3	-56.4	-40.9	-57.0	-69.5								
12	18 Utd Arab Emirates	21.0	21.4	30.7		1.6	43.8												
13	13 India	27.4	28.6	30.7		9.6	10.8	-49.4	-7.1	-71.0	-72.1								
14	15 Turkey	22.5	25.2	29.8	\$	12.2	18.3	-65.7	-11.3	-98.7	-71.9	-87.7	-70.0	-58.4	-51.3	-52.1	-52.7		
15	12 Hong Kong (China)	33.3	36.9	29.0		11.2	-21.2	-90.4	-81.1	-97.0	-96.8								
16	14 Canada	25.0	26.9	28.0		7.5	6.5	-59.4	-5.2	-69.1	-88.0								
17	17 Mexico	21.3	22.5	24.6	\$	5.6	9.1	-55.1	-14.6	-91.4	-70.8	-77.4	-73.7	-56.7	-53.4	-54.8	-48.8		
18	16 Austria	20.5	23.1	22.9		8.0	4.8	-29.7	-9.7	-81.9	-24.2								
19	23 Korea (ROK)	13.4	18.6	20.9	\$	38.9	12.4	-49.5	-31.2	-63.2	-49.5	-51.7	-50.0	-46.7	-51.0	-50.5	-56.9		
20	20 Portugal	17.6	20.1	20.5		9.7	7.3	-57.6	-11.0	-83.8	-59.4	-65.1	-54.2	-60.6	-61.5	-61.5	-51.0		
21	22 Greece	16.5	19.0	20.4		10.0	13.0	-76.5	-20.5	-97.0	-72.6	-81.7	-66.4	-69.9	-64.0	-80.8	-88.6		
22	19 Singapore	19.9	20.4	20.3		0.3	0.5	-74.1	-35.8	-86.7	-87.4								
23	21 Malaysia	18.4	19.6	19.8		0.3	3.7	-84.8	-39.9	-99.8	-99.4								
24	25 Netherlands	16.1	17.8	18.5		5.5	9.7	-45.5	-15.6	-74.3	-40.7								
25	24 Switzerland	17.2	18.0	17.9		3.7	1.4	-52.3	-13.8	-76.8	-55.2								
26	26 Indonesia	13.1	16.4	16.9	\$	25.0	3.0	-80.8	-28.3	-97.6	-97.9								
27	28 Saudi Arabia	12.1	13.8	16.4		14.4	19.2	-72.0	-15.4	-98.2	-96.6								
28	29 Taiwan (pr. of China)	12.3	13.7	14.4	\$	11.3	5.2	-87.2	-59.8	-97.6	-96.1								
29	27 Poland	12.6	13.9	13.7		5.9	5.0	-41.6	-10.1	-65.1	-43.6								
30	30 Egypt	7.8	11.6	13.0	\$	49.4	12.2	-65.8	-11.4	-90.4	-80.9								
31	34 Vietnam	8.9	10.1	11.8	\$	13.4	17.0	-78.8	-18.6	-100.0	-96.7								
32	32 Croatia	10.3	11.1	11.8	€	6.0	10.9	-54.3	-19.3	-76.5	-49.0								
33	31 Russian Federation	8.9	11.6	11.0	\$	29.6	-5.4	-70.1	-9.2	-87.2	-87.3								
34	33 New Zealand	10.6	10.9	10.5		5.3	1.4	-39.1	-3.2	-51.6	-53.1								
35	40 Philippines	7.0	8.2	9.8	\$	17.9	18.7	-79.5	-37.9	-95.7	-94.9	-95.2	-94.5	-95.0	-94.9	-95.4	-91.0		
36	35 Sweden	10.0	10.0	9.2		2.3	-0.1	-53.7	-9.8	-72.3	-62.9								
37	36 Denmark	8.5	9.1	9.0		2.5	4.2	-55.2	-16.0	-81.7	-46.7								
38	38 Belgium	8.4	8.9	8.9		1.5	5.2	-21.6	0.5	-37.7	-24.8	-22.9	-20.4	-31.5					
39	39 Lebanon	7.6	8.4	8.6	\$	10.4	2.3	-67.8	-42.5	-87.7									
40	37 South Africa	8.8	8.9	8.4	sa	0.7	2.3	-64.1	-9.7	-91.9	-90.6								
41	41 Morocco	7.4	7.8	8.2		1.3	7.8	-53.8	2.3	-67.5	-92.6	-90.1	-96.7	-89.1	-66.9	-28.8	-4.8		
42	44 Israel	6.8	7.2	7.6	\$	5.7	5.2	-66.5	-17.5	-85.7	-75.8	-78.2	-74.2	-75.0	-81.7	-81.6	-72.9		
43	42 Dominican Rep.	7.2	7.6	7.5	\$	5.2	-1.2	-65.2	-25.5	-98.4	-78.9								
44	45 Hungary	6.2	6.9	7.3		10.4	13.5	-50.2	-7.5	-68.7	-53.5								
45	43 Czech Republic	6.9	7.4	7.3		-0.2	3.6	-49.7	-9.6	-63.1	-56.6								
46	46 Ireland	5.6	6.8	6.4		15.8	-0.4	-71.0	-19.2	-89.6	-75.4								
47	49 Brazil	5.8	5.9	6.0	\$	1.9	1.2	-49.2	-15.2	-68.8	-69.3	-76.5	-68.7	-59.0	-60.8	-59.3	-44.8		
48	48 Norway	5.6	5.9	5.9		4.9	6.9	-71.7	-11.8	-91.0	-82.2								
49	53 Jordan	4.2	5.2	5.8		24.7	10.2	-75.7	-10.7	-100.0	-94.9	-91.3	-96.3	-96.7	-83.4	-86.6	-83.2		
50	47 Luxembourg	5.7	6.1	5.7		1.9	-1.1	-18.2	-0.8	-65.8	-5.7								

Source: World Tourism Organization (UNWTO) ©

(Data as collected by UNWTO, March 2021)

See box in page 'Annex-1' for explanation of abbreviations and signs used, and corresponding notes in the tables of the regions

International Tourism Expenditure (USD billion)

Local currencies, current prices (% change over same period of previous year)

Rank '19 '18	(USD billion)			Change (%)		2020*									
	2017	2018	2019*	18/17	19*/18	YTD	Q1	Q2	Q3	Jul.	Aug.	Sep.	Oct.	Nov.	Dec.
World	1,328	1,439	1,466												
1 1 China	257.9	277.3	254.6		5.1 -4.2	-46.5	-27.3	-59.5	-53.1						
2 2 United States	118.0	126.0	134.6	sa	6.8 6.8	-70.8	-24.8	-92.9	-86.8	-89.6	-87.0	-83.5	-81.5	-78.1	-73.1
3 3 Germany	89.1	95.6	93.2		2.7 2.9	-55.3	-14.6	-78.5	-48.9	-50.8	-46.5	-49.8	-67.9	-75.4	-76.2
4 4 United Kingdom	66.4	70.9	71.9		2.9 6.0	-67.3	-16.9	-89.3	-77.6						
5 5 France	44.0	48.9	51.7		6.3 11.5	-46.5	-13.7	-69.2	-48.1	-47.5	-51.4	-44.0	-40.9	-55.2	-46.4
6 9 Russian Federation	31.1	34.3	36.2	\$	10.3 5.5	-72.3	-15.4	-89.3	-89.1						
7 6 Australia	34.4	37.0	36.0		10.3 4.6	-81.0	-21.9	-99.1	-99.0	-99.0	-98.9	-99.1	-98.9	-98.6	-98.8
8 8 Canada	34.7	34.5	35.8		-0.6 6.1	-65.8	-1.0	-92.8	-92.8						
9 7 Korea (ROK)	31.7	35.1	32.7	\$	10.9 -6.8	-50.6	-29.1	-65.1	-55.7	-61.0	-54.6	-50.8	-51.4	-51.3	-54.1
10 10 Italy	27.7	30.1	30.3		3.8 6.3	-64.5	-28.8	-77.9	-66.3	-65.0	-65.5	-69.0	-75.5	-82.6	-80.1
11 12 Spain	22.2	26.4	27.9		14.2 11.3	-70.8	-13.4	-97.5	-77.5	-74.3	-74.0	-84.3	-83.9	-86.3	
12 11 Singapore	25.0	26.5	27.3		3.6 4.2	-74.7	-19.6	-93.2	-92.1						
13 13 Hong Kong (China)	25.4	26.4	26.9		4.7 1.6	-80.3	-49.0	-93.0	-88.0						
14 22 Utd Arab Emirates	17.6	18.0	26.7		2.0 48.3										
15 14 India	18.4	21.3	22.9		21.7 10.6	-41.0	-15.5	-51.5	-52.1						
16 16 Japan	18.2	20.2	21.3		9.4 3.8	-74.7	-35.5	-87.9	-88.6	-88.0	-89.5	-88.1	-87.4	-86.9	-87.5
17 15 Netherlands	20.0	20.9	20.6		-0.1 4.3	-64.3	-18.5	-90.5	-69.0						
18 17 Taiwan (pr. of China)	18.0	19.4	20.5	\$	7.8 5.5	-82.1	-54.3	-96.2	-93.3						
19 18 Switzerland	19.1	19.1	18.8		-0.7 -0.1	-47.6	-10.4	-73.3	-48.8						
20 19 Belgium	15.5	18.5	18.7		13.9 6.8	-30.4	-10.8	-47.0	-29.9	-24.6	-33.0	-33.9			
21 20 Brazil	19.0	18.3	17.6	\$	-3.9 -3.7	-69.3	-32.1	-85.7	-81.5	-85.9	-79.4	-77.3	-81.2	-73.6	-75.3
22 23 Norway	16.2	17.1	16.5		3.5 4.7	-71.7	-16.2	-97.4	-86.7						
23 25 Kuwait	12.5	14.3	15.8		13.6 11.2	-56.4	-17.3	-94.5							
24 24 Saudi Arabia	17.6	16.6	15.1		-5.1 -9.1	-43.0	-13.8	-59.7	-57.5						
25 21 Sweden	17.0	18.1	14.4		8.3 4.6	-55.6	-12.8	-80.7	-64.9						
26 27 Thailand	10.5	12.1	14.2		9.4 -1.5	-70.2	-19.4	-93.2	-95.2						
27 34 Nigeria	5.8	9.6	13.5	\$	65.1 41.2	-62.9	-2.3	-96.3	-96.1						
28 26 Malaysia	10.8	12.1	12.4		5.3 4.8	-60.5	-18.3	-75.4	-72.5						
29 28 Philippines	11.8	11.9	12.0	\$	0.1 1.5	-57.5	-28.4	-73.6	-73.0	-71.8	-74.0	-73.1			
30 29 Austria	10.7	11.8	11.6		6.0 3.4	-58.2	-16.8	-89.7	-55.6						
31 33 Indonesia	8.3	10.3	11.3	\$	24.4 9.8	-83.6	-38.9	-96.5	-96.4						
32 40 Iraq	8.1	7.9	10.9	\$	-2.9 39.1	-62.9	10.1	-97.9	-85.2						
33 32 Denmark	9.8	10.5	10.1		2.9 1.4	-49.5	-15.3	-65.2	-43.0						
34 30 Mexico	10.8	11.2	9.9	\$	3.6 -12.0	-63.8	-17.4	-87.8	-79.2	-82.4	-78.4	-76.3	-72.1	-69.2	-63.6
35 36 Qatar	9.6	9.3	9.5		-3.8 2.3	-32.0	-11.7	-49.3	-35.0						
36 35 Poland	8.7	9.5	9.2		4.9 3.3	-41.7	-9.3	-68.0	-42.6						
37 37 Iran	11.3	8.7	..	\$	-23.1 ..										
38 38 Ukraine	7.1	7.9	8.5	\$	10.9 7.8	-44.8	-5.5	-66.5	-48.0	-48.0	-47.5	-48.5	-51.7	-57.0	-49.7
39 41 Ireland	6.6	7.6	8.2		10.1 13.9	-68.8	-15.6	-96.4	-79.5						
40 39 Israel	7.1	7.9	8.2	\$	11.6 3.5	-75.7	-18.6	-95.7	-90.5						
41 31 Argentina	11.4	10.7	7.9	\$	-6.2 -26.4	-65.3	-30.0	-95.3	-92.2						
42 43 Vietnam	5.0	6.1	6.4	\$	22.0 4.1	-37.5	-2.9	-47.6	-44.6						
43 42 Lebanon	5.6	6.3	6.3	\$	12.0 1.3	-60.6	-25.4	-90.6							
44 47 Romania	4.4	5.3	6.0	€	17.3 18.6	-50.9	0.6	-78.5	-58.3	-59.5	-57.9	-57.3	-58.7	-61.2	-57.0
45 45 Czech Republic	5.4	6.0	5.9		1.9 4.2	-37.4	-5.0	-56.7	-49.5						
46 46 Portugal	4.6	5.4	5.8		13.2 13.1	-46.1	-12.0	-67.9	-43.1	-44.7	-44.0	-40.0	-47.3	-52.9	-46.5
47 44 Finland	5.6	6.1	5.7		4.2 -1.5	-72.5	-9.3	-92.8	-84.0						
48 48 Colombia	4.5	4.8	5.0	\$	7.8 3.1	-71.1	-12.8	-96.3	-96.1						
49 49 New Zealand	4.5	4.6	4.4		6.3 0.5	-61.5	-7.1	-82.8	-83.7						
50 50 Turkey	4.8	4.6	4.1	\$	-4.7 -10.6	-74.7	-28.3	-93.8	-91.4	-90.7	-91.5	-92.2	-82.2	-83.8	-82.1

Source: World Tourism Organization (UNWTO) ©

(Data as collected by UNWTO, March 2021)

See box in page 'Annex-1' for explanation of abbreviations and symbols used

International Tourism Expenditure (EUR billion)

Local currencies, current prices (% change over same period of previous year)

Rank	(EUR billion)			Change (%)		2020*												
	'19	'18	2019*	18/17	19*/18	YTD	Q1	Q2	Q3	Jul.	Aug.	Sep.	Oct.	Nov.	Dec.			
World	1,175	1,219	1,310															
1	1	China	228.3	234.8	227.4	5.1	-4.2	-46.5	-27.3	-59.5	-53.1							
2	2	United States	104.4	106.7	120.2	sa	6.8	6.8	-70.8	-24.8	-92.9	-86.8	-89.6	-87.0	-83.5	-81.5	-78.1	-73.1
3	3	Germany	78.8	80.9	83.3		2.7	2.9	-55.3	-14.6	-78.5	-48.9	-50.8	-46.5	-49.8	-67.9	-75.4	-76.2
4	4	United Kingdom	58.8	60.0	64.2		2.9	6.0	-67.3	-16.9	-89.3	-77.6						
5	5	France	38.9	41.4	46.1		6.3	11.5	-46.5	-13.7	-69.2	-48.1	-47.5	-51.4	-44.0	-40.9	-55.2	-46.4
6	9	Russian Federation	27.5	29.0	32.3		10.3	5.5	-72.3	-15.4	-89.3	-89.1						
7	6	Australia	30.5	31.3	32.1		10.3	4.6	-81.0	-21.9	-99.1	-99.0	-99.0	-98.9	-99.1	-98.9	-98.6	-98.8
8	8	Canada	30.7	29.2	32.0	\$	-0.6	6.1	-65.8	-1.0	-92.8	-92.8						
9	7	Korea (ROK)	28.1	29.7	29.2	\$	10.9	-6.8	-50.6	-29.1	-65.1	-55.7	-61.0	-54.6	-50.8	-51.4	-51.3	-54.1
10	10	Italy	24.6	25.5	27.1		3.8	6.3	-64.5	-28.8	-77.9	-66.3	-65.0	-65.5	-69.0	-75.5	-82.6	-80.1
11	12	Spain	19.6	22.4	24.9		14.2	11.3	-70.8	-13.4	-97.5	-77.5	-74.3	-74.0	-84.3	-83.9	-86.3	
12	11	Singapore	22.1	22.5	24.4		3.6	4.2	-74.7	-19.6	-93.2	-92.1						
13	13	Hong Kong (China)	22.5	22.4	24.0		4.7	1.6	-80.3	-49.0	-93.0	-88.0						
14	22	Utd Arab Emirates	15.6	15.2	23.8		2.0	48.3										
15	14	India	16.3	18.1	20.5	\$	21.7	10.6	-41.0	-15.5	-51.5	-52.1						
16	16	Japan	16.1	17.1	19.0		9.4	3.8	-74.7	-35.5	-87.9	-88.6	-88.0	-89.5	-88.1	-87.4	-86.9	-87.5
17	15	Netherlands	17.7	17.7	18.4		-0.1	4.3	-64.3	-18.5	-90.5	-69.0						
18	17	Taiwan (pr. of China)	15.9	16.5	18.3		7.8	5.5	-82.1	-54.3	-96.2	-93.3						
19	18	Switzerland	16.9	16.1	16.8		-0.7	-0.1	-47.6	-10.4	-73.3	-48.8						
20	19	Belgium	13.7	15.7	16.7		13.9	6.8	-30.4	-10.8	-47.0	-29.9	-24.6	-33.0	-33.9			
21	20	Brazil	16.8	15.5	15.7	\$	-3.9	-3.7	-69.3	-32.1	-85.7	-81.5	-85.9	-79.4	-77.3	-81.2	-73.6	-75.3
22	23	Norway	14.4	14.5	14.8		3.5	4.7	-71.7	-16.2	-97.4	-86.7						
23	25	Kuwait	11.1	12.1	14.1		13.6	11.2	-56.4	-17.3	-94.5							
24	24	Saudi Arabia	15.5	14.1	13.5		-5.1	-9.1	-43.0	-13.8	-59.7	-57.5						
25	21	Sweden	15.0	15.3	12.8		8.3	4.6	-55.6	-12.8	-80.7	-64.9						
26	27	Thailand	9.3	10.2	12.7	\$	9.4	-1.5	-70.2	-19.4	-93.2	-95.2						
27	34	Nigeria	5.1	8.1	12.1		65.1	41.2	-62.9	-2.3	-96.3	-96.1						
28	26	Malaysia	9.6	10.3	11.1	\$	5.3	4.8	-60.5	-18.3	-75.4	-72.5						
29	28	Philippines	10.5	10.0	10.8	\$	0.1	1.5	-57.5	-28.4	-73.6	-73.0	-71.8	-74.0	-73.1			
30	29	Austria	9.5	10.0	10.4		6.0	3.4	-58.2	-16.8	-89.7	-55.6						
31	33	Indonesia	7.3	8.7	10.1	\$	24.4	9.8	-83.6	-38.9	-96.5	-96.4						
32	40	Iraq	7.2	6.7	9.8	\$	-2.9	39.1	-62.9	10.1	-97.9	-85.2						
33	32	Denmark	8.7	8.9	9.0		2.9	1.4	-49.5	-15.3	-65.2	-43.0						
34	30	Mexico	9.6	9.5	8.8		3.6	-12.0	-63.8	-17.4	-87.8	-79.2	-82.4	-78.4	-76.3	-72.1	-69.2	-63.6
35	36	Qatar	8.5	7.9	8.5		-3.8	2.3	-32.0	-11.7	-49.3	-35.0						
36	35	Poland	7.7	8.0	8.2	\$	4.9	3.3	-41.7	-9.3	-68.0	-42.6						
37	37	Iran	10.0	7.4	..		-23.1	..										
38	38	Ukraine	6.3	6.7	7.6		10.9	7.8	-44.8	-5.5	-66.5	-48.0	-48.0	-47.5	-48.5	-51.7	-57.0	-49.7
39	41	Ireland	5.8	6.4	7.3	\$	10.1	13.9	-68.8	-15.6	-96.4	-79.5						
40	39	Israel	6.2	6.7	7.3	\$	11.6	3.5	-75.7	-18.6	-95.7	-90.5						
41	31	Argentina	10.1	9.0	7.0		-6.2	-26.4	-65.3	-30.0	-95.3	-92.2						
42	43	Vietnam	4.5	5.2	5.7	\$	22.0	4.1	-37.5	-2.9	-47.6	-44.6						
43	42	Lebanon	4.9	5.3	5.7	\$	12.0	1.3	-60.6	-25.4	-90.6							
44	47	Romania	3.9	4.5	5.4	€	17.3	18.6	-50.9	0.6	-78.5	-58.3	-59.5	-57.9	-57.3	-58.7	-61.2	-57.0
45	45	Czech Republic	4.8	5.1	5.3		1.9	4.2	-37.4	-5.0	-56.7	-49.5						
46	46	Portugal	4.1	4.6	5.2		13.2	13.1	-46.1	-12.0	-67.9	-43.1	-44.7	-44.0	-40.0	-47.3	-52.9	-46.5
47	44	Finland	4.9	5.2	5.1	\$	4.2	-1.5	-72.5	-9.3	-92.8	-84.0						
48	48	Colombia	4.0	4.1	4.4	\$	7.8	3.1	-71.1	-12.8	-96.3	-96.1						
49	49	New Zealand	3.9	3.9	3.9	\$	6.3	0.5	-61.5	-7.1	-82.8	-83.7						
50	50	Turkey	4.3	3.9	3.7		-4.7	-10.6	-74.7	-28.3	-93.8	-91.4	-90.7	-91.5	-92.2	-82.2	-83.8	-82.1

Source: World Tourism Organization (UNWTO) ©

(Data as collected by UNWTO, March 2021)

See box in page 'Annex-1' for explanation of abbreviations and symbols used

International Tourist Arrivals by (sub)region and selected countries and territories of destination

Series	(1000)			Change (%)		Percentage change over same period of previous year											
	2018	2019	2020*	19/18	20*/19	Series	2021*			2020*							
							YTD	Jan.	Feb.	Q1	Q2	Q3	Q4	Oct.	Nov.	Dec.	
Europe	715,994	746,301	231,836	4.2	-68.9		-85.1	-85.1		-21.5	-92.8	-67.9	-82.0	-76.6	-85.5	-85.9	
- of which EU-27	523,835	540,673	176,168	3.2	-67.4		-86.0	-86.0		-23.1	-91.7	-64.1	-82.9	-77.2	-86.9	-87.1	
Northern Europe	81,035	83,740	20,615	3.3	-75.4		-92.2	-92.2		-18.2	-95.1	-81.2	-89.2	-83.6	-91.2	-93.6	
Denmark	TF	12,749	14,573	..	14.3	..	TCE	-88.5	-88.5		-22.5	-92.8	-65.6	-82.5	-76.2	-85.8	-87.8
Finland	TCE	3,224	3,290	896	2.0	-72.8	TCE	-93.2	-93.5	-92.7	-16.1	-96.0	-84.6	-91.2	-88.8	-89.1	-93.9
Iceland	TF	2,344	2,013	..	-14.1	..	TCE	-97.9	-97.9		-24.7	-97.0	-86.0	-98.0	-97.8	-98.1	-98.3
Ireland	TF	10,926	10,951	..	0.2	..	TF*										
Norway	TF	5,688	5,879	..	3.4	..	TCE	-85.3	-85.3		-12.4	-94.8	-78.9	-83.5	-81.0	-83.1	-86.7
Sweden	TCE	7,440	7,616	..	2.4	..	TCE	-80.3	-80.3		-25.5	-88.5	-81.8	-72.9	-63.2	-78.8	-79.3
United Kingdom	TF	38,664	39,418	..	1.9	..	VF				-16.1	-96.2					
Western Europe	200,164	205,367	78,587	2.6	-61.7		-91.1	-91.1		-22.1	-89.6	-58.0	-86.1	-78.2	-89.9	-91.7	
Austria	TCE	30,816	31,884	15,091	3.5	-52.7	TCE	-98.5	-98.5	-98.5	-15.2	-88.9	-39.2	-90.2	-76.1	-94.9	-98.4
Belgium	TCE	9,119	9,343	..	2.5	..	TCE				-22.5	-94.6	-65.7		-86.3	-93.0	
France	TF	89,400	TCE										
Germany	TCE	38,881	39,563	12,449	1.8	-68.5	TCE	-92.3	-92.3		-25.0	-91.7	-61.5	-86.9	-77.0	-91.8	-94.0
Liechtenstein	TCE	87	98	59	12.3	-40.2	TCE				-6.5	-76.5	-29.5	-48.3	-38.6	-53.9	-56.7
Luxembourg	TCE	1,018	1,041	509	2.3	-51.1	TCE				-21.2	-84.1	-43.3	-44.7	-44.1	-46.3	-43.6
Monaco	THS	347	363	..	4.6	..	THS										
Netherlands	TCE	18,781	20,128	7,319	7.2	-63.6	TCE				-23.4	-86.9	-47.9	-87.3	-84.2	-89.7	-89.4
Switzerland	TF	11,715	11,818	..	0.9	..	THS	-84.2	-84.2		-26.4	-94.4	-70.3	-83.9	-82.3	-87.4	-83.0
Central/Eastern Eur.	146,185	153,262	44,782	4.8	-70.8		-78.3	-78.3		-17.6	-94.3	-73.1	-81.1	-79.5	-81.9	-81.9	
Armenia	TF	1,652	1,894	375	14.7	-80.2	TF				-14.6	-100.0	-97.6	-89.1			
Azerbaijan	TF	2,605	2,864	..	9.9	..	VF	-52.8	-35.0	-73.0	-14.9	-91.1	-90.4	-85.4	-87.1	-84.9	-84.2
Belarus	TCE	2,142	2,201	..	2.8	..	TCE										
Bulgaria	TF	9,273	9,312	..	0.4	..	VF	-60.0	-60.0		-10.5	-81.9	-64.6	-53.7	-45.3	-53.5	-63.3
Czech Republic	TF	14,283	TCE				-25.0	-95.7	-68.6	-96.0	-94.4	-97.1	-96.8
Estonia	TF	3,226	3,336	1,026	3.4	-69.2	TCE	-91.9	-91.9		-15.5	-92.2	-64.5	-90.1	-89.0	-89.7	-91.6
Georgia	TF	4,757	5,080	1,089	6.8	-78.6	TF	-89.5	-91.9	-86.1	-13.2	-93.4	-93.9	-88.3	-90.0	-88.3	-85.8
Hungary	TF	17,152	16,937	6,831	-1.3	-59.7	TF				-15.1	-100.0	-55.6	-61.8			
Kazakhstan	TF	VF				-14.1	-94.0	-90.6	-87.9			
Kyrgyzstan	VF	6,947	8,508	..	22.5										
Latvia	TF	1,946	1,935	..	-0.6	..	TCE	-93.4	-93.4		-15.5	-88.7	-49.2	-89.8	-87.8	-89.1	-92.8
Lithuania	TF	2,825	2,875	..	1.8	..	TCE	-88.0	-88.0		-20.8	-91.2	-72.7	-86.9	-84.1	-86.6	-90.6
Poland	TF	19,622	21,158	8,418	7.8	-60.2	TF				-16.1	-91.0	-51.4	-75.5	-69.2	-78.3	-79.8
Rep. Moldova	TCE	160	174	29	8.6	-83.5	TCE				-40.4	-98.6	-92.1	-87.3			
Romania	TCE	2,797	2,684	..	-4.0	..	TCE	-85.0	-85.0		-36.3	-97.9	-89.4	-89.4	-89.7	-89.4	-88.9
Russian Federation	VF	24,551	24,592	..	0.2	..	VF				-21.6						
Slovakia	TF	5,453	TCE	-96.8	-96.8		-14.9	-94.3	-54.1	-92.4	-90.9	-93.5	-93.2
Tajikistan	VF	1,250	VF										
Turkmenistan	TF	TF										
Ukraine	TF	14,207	13,438	..	-5.4	..	TF				-19.5	-94.8	-86.7	-76.4			
Uzbekistan	VF	5,346	6,749	..	26.2	..	VF				-12.0	-99.9	-92.7				
Southern/Medit. Eur.	288,610	303,932	87,851	5.3	-71.1		-81.5	-81.5		-24.7	-93.5	-68.7	-77.2	-72.7	-82.3	-80.3	
Albania	TF	5,142	5,919	2,521	15.1	-57.4	VF	-28.2	-25.7	-30.9	-17.5	-85.6	-59.7	-43.3	-46.7	-44.7	-37.4
Andorra	TF	3,042	3,090	1,872	1.6	-39.4	TF	-86.4	-89.9	-82.8	-7.2	-91.1	-18.2	-72.5	-26.6	-94.8	-90.3
Bosnia & Herzg.	TCE	1,053	1,198	196	13.8	-83.6	TCE	-69.4	-69.4		-27.4	-97.9	-90.2	-85.0	-88.5	-84.2	-78.4
Croatia	TCE	16,645	17,353	5,545	4.3	-68.0	TCE	-86.6	-86.6		-41.6	-86.4	-57.9	-90.2	-90.1	-87.4	-93.4
Cyprus	TF	3,939	3,977	632	1.0	-84.1	TF	-95.3	-95.5	-95.2	-31.0	-99.3	-84.3	-83.3	-76.9	-94.7	-91.2
Greece	TF	30,123	31,348	7,217	4.1	-77.0	TF	-87.9	-87.9		-5.6	-95.3	-77.4	-75.7	-65.6	-98.0	-86.0
Israel	TF	4,121	4,552	831	10.5	-81.7	TF	-98.5	-97.6	-99.3	-30.4	-99.3	-96.0	-96.1	-95.5	-96.7	-96.3
Italy	TF	61,567	64,513	25,366	4.8	-60.7	TF				-34.4	-81.4	-48.9	-74.2	-65.8	-80.0	-80.9
Malta	TF	2,599	2,753	659	5.9	-76.1	TF	-90.7	-90.7		-13.1	-100.0	-77.0	-87.9	-83.4	-92.2	-91.1
Montenegro	TCE	2,077	2,510	351	20.8	-86.0	TCE	-51.4	-51.4		-27.3	-97.9	-85.0	-90.3	-92.3	-89.6	-85.0
North Macedonia	TCE	707	758	118	7.1	-84.4	TCE	-69.8	-69.8		-18.9	-99.0	-93.3	-86.8	-87.4	-87.3	-85.2
Portugal	TF	22,800	24,600	..	7.9	..	TCE				-21.9	-98.2	-76.0	-82.8	-78.3	-88.4	-85.3
San Marino	THS	84	111	58	32.3	-47.7	TCE				-10.5	-92.3	-25.6	-54.2	-34.8	-61.0	-72.3
Serbia	TCE	1,711	1,847	446	8.0	-75.9	TCE	-75.0	-75.0		-14.2	-93.9	-86.4	-79.3	-75.0	-79.3	-84.7
Slovenia	TCE	4,425	4,702	1,216	6.3	-74.1	TCE*	-96.0	-97.0	-95.0	-28.3	-92.7	-68.4	-93.4	-88.1	-97.5	-98.0
Spain	TF	82,808	83,509	18,958	0.8	-77.3	TF	-89.5	-89.5		-25.7	-99.1	-79.0	-87.2	-86.6	-90.2	-84.9
Turkey	TF	45,768	51,192	15,887	11.9	-69.0	TF*	-71.4	-71.4		-22.2	-97.9	-72.7	-61.6	-59.0	-61.5	-67.1

Source: World Tourism Organization (UNWTO) ©

(Data as collected by UNWTO, March 2021)

See box in page 'Annex-1' for explanation of abbreviations and symbols used

* Provisional data

International Tourism Receipts by (sub)region and selected countries and territories of destination

Local currencies, current prices (% change over same period of previous year)

	(USD million)			Change (%)		2020*										
	2017	2018	2019*	18/17	19*/18	YTD	Q1	Q2	Q3	Q4	Aug.	Sep.	Oct.	Nov.	Dec.	
Europe	518,518	569,184	572,178													
- of which EU-27	388,329	427,893	423,722													
Northern Europe	84,042	88,691	89,598													
Denmark	8,498	9,111	8,985	2.5	4.2	-54.5	-15.4	-81.4	-46.4	-63.1						
Finland	3,392	3,666	3,726	3.4	7.2	-65.4	-16.5	-87.2	-77.0	-83.9						
Iceland	3,008	3,121	2,695	5.2	-2.3	-73.8	-32.7	-92.0	-76.3	-89.1						
Ireland	5,617	6,803	6,425	15.8	-0.4	-68.7	-19.2	-89.6	-75.4							
Norway	5,558	5,929	5,855	4.9	6.9	-71.1	-11.7	-91.0	-82.2							
Sweden	14,106	14,899	15,247	7.4	11.3	-52.9	-9.8	-72.6	-63.0							
United Kingdom	48,018	50,050	52,721	0.5	10.1	-60.3	-18.0	-71.1	-72.6							
Western Europe	166,629	182,881	179,588													
Austria	20,460	23,099	22,942	8.0	4.8	-29.7	-9.7	-81.9	-24.2							
Belgium	8,382	8,891	8,870	1.5	5.2	-21.6	0.5	-37.7	-24.8		-20.4	-31.5				
France	58,855	66,031	63,801	7.3	1.9	-49.8	-18.0	-72.5	-44.9	-54.2	-39.8	-50.9	-50.6	-63.0	-50.5	
Germany	39,858	42,977	41,638	3.1	2.2	-45.8	-10.4	-70.7	-38.4	-58.5	-37.8	-37.7	-47.3	-59.1	-70.6	
Liechtenstein
Luxembourg	5,735	6,112	5,731	1.9	-1.1	-21.9	-0.6	-65.2	1.1							
Monaco
Netherlands	16,117	17,782	18,487	5.5	9.7	-45.5	-15.6	-74.3	-40.7							
Switzerland	17,221	17,989	17,949	3.7	1.4	-50.1	-14.2	-76.7	-55.4							
Central/Eastern Eur.	61,184	69,024	68,701													
Armenia	1,204	1,329	1,528	\$	10.4	15.0	-78.3	-15.3	-98.1	-97.3						
Azerbaijan	3,012	2,634	1,792	\$	-12.5	-32.0	-79.7	-16.3	-99.0	-97.7						
Belarus	801	883	901	\$	10.3	2.0	-60.0	-7.0	-88.0	-70.4						
Bulgaria	4,045	4,495	4,287	6.1	0.6	-62.7	-11.1	-82.0	-68.0	-51.5	-69.5	-63.7	-45.1	-53.4	-58.1	
Czech Republic	6,933	7,442	7,303	-0.2	3.6	-44.7	-9.7	-64.2	-58.1							
Estonia	1,654	1,783	1,745	3.1	3.3	-64.4	-16.0	-86.9	-67.4							
Georgia	2,704	3,222	3,269	\$	19.1	1.4	-80.7	-26.1	-96.7	-96.2						
Hungary	6,174	6,924	7,305	10.4	13.5	-47.7	-7.5	-68.7	-53.5							
Kazakhstan	2,135	2,255	2,463	\$	5.6	9.3	-79.2	-20.7	-96.8	-95.0						
Kyrgyzstan	429	460	644	\$	7.2	40.0	-76.0	-20.9	-95.8	-93.0						
Latvia	948	1,059	1,017	6.9	1.2	-55.6	-2.6	-73.8	-59.5	-77.7	-59.8	-62.3	-78.0	-77.1	-77.9	
Lithuania	1,321	1,505	1,493	9.0	4.6	-66.7	-20.6	-87.9	-76.1							
Poland	12,614	13,863	13,705	5.9	5.0	-41.6	-10.1	-65.1	-43.6							
Rep. Moldova	323	381	396	\$	17.9	4.1	-23.2	0.1	-39.4	-25.6						
Romania	3,063	3,400	3,576	€	6.2	10.9	-60.8	-11.1	-86.0	-66.8	-65.9	-67.1	-64.9	-65.8	-66.5	-65.2
Russian Federation	8,945	11,591	10,961	\$	29.6	-5.4	-70.1	-9.2	-87.2	-87.3						
Slovakia	2,923	3,200	3,203	4.7	5.6	-8.9	-11.7	-30.8	12.1							
Tajikistan	8	9	14	\$	16.6	53.8	-56.2	11.3	-55.8	-80.6						
Turkmenistan
Ukraine	1,261	1,445	1,620	\$	14.6	12.1	-78.4	-2.4	-96.2	-87.6	-85.0	-87.6	-89.1	-83.7	-87.4	-84.0
Uzbekistan	689	1,144	1,481	\$	66.2	29.4	-74.0	-13.2	-95.5	-92.8						
Southern/Medit. Eur.	206,663	228,588	234,291													
Albania	1,929	2,193	2,332	€	8.7	12.2	-55.3	-0.6	-87.6	-58.7						
Andorra
Bosnia & Herzg.	920	1,101	1,176	14.3	12.6	-72.4	-22.2	-85.4	-80.1							
Croatia	10,320	11,127	11,753	€	6.0	10.9	-54.3	-19.3	-76.5	-49.0						
Cyprus	3,231	3,472	3,254	2.8	-1.1	-82.0	-32.8	-93.6	-82.8							
Greece	16,528	18,998	20,351	10.0	13.0	-76.5	-20.5	-97.0	-72.6	-70.1	-66.4	-69.9	-64.0	-80.8	-88.6	
Israel	6,834	7,225	7,600	\$	5.7	5.2	-64.1	-17.5	-85.7	-75.7	-74.9	-75.2	-81.1			
Italy	44,233	49,262	49,596	6.5	6.2	-60.6	-34.8	-84.7	-45.5	-76.3	-40.2	-42.8	-70.4	-81.6	-81.2	
Malta	1,727	1,859	1,901	3.0	7.9	-78.1	-21.4	-100.0	-79.7							
Montenegro	1,041	1,182	1,230	8.6	9.7	-86.8	-4.9	-95.3	-91.2	-72.6						
North Macedonia	327	382	396	€	13.3	9.0	-38.1	3.6	-57.7	-50.1	-26.2	-59.0	-40.9	-38.2	-28.2	-11.3
Portugal	17,567	20,140	20,477	9.7	7.3	-57.6	-11.0	-83.8	-59.4	-58.4	-54.2	-60.6	-61.5	-61.5	-51.0	
San Marino
Serbia	1,346	1,547	1,606	€	11.6	9.1	-24.5	7.7	-38.9	-38.8	-16.4	-48.7	-29.3	-19.5	-14.7	-15.2
Slovenia	2,851	3,193	3,081	7.1	1.8	-60.9	-22.0	-82.2	-56.6	-77.5	-54.6	-61.0	-71.2	-80.7	-82.5	
Spain	75,332	81,689	79,708	3.7	2.9	-76.9	-23.5	-99.2	-80.0		-76.9	-87.2	-87.5	-90.0		
Turkey	22,478	25,220	29,829	\$	12.2	18.3	-65.7	-11.3	-98.7	-71.9	-51.8	-70.0	-58.4	-51.3	-52.1	-52.7

Source: World Tourism Organization (UNWTO) ©

(Data as collected by UNWTO, March 2021)

See box in page 'Annex-1' for explanation of abbreviations and symbols used

* Provisional data

International Tourist Arrivals by (sub)region and selected countries and territories of destination

Series	(1000)			Change (%)		Percentage change over same period of previous year										
	2018	2019	2020*	19/18	20*/19	2021*			2020*							
						YTD	Jan.	Feb.	Q1	Q2	Q3	Q4	Oct.	Nov.	Dec.	
Asia and the Pacific	346,518	360,386	57,104	4.0	-84.2		-95.9	-95.9		-46.9	-98.7	-96.9	-95.4	-95.6	-95.4	-95.3
North-East Asia	169,190	170,311	20,186	0.7	-88.1		-94.0	-94.0		-65.1	-98.9	-95.7	-92.9	-93.4	-92.5	-92.6
China	TF	62,900	65,700	..	4.5	..	TF			-68.4	-98.1	-92.4		-91.7	-91.0	
Hong Kong (China)	TF	29,263	23,752	1,359	-18.8	-94.3	TF	-99.6	-99.6	-83.5	-99.6	-99.3	-99.5	-99.4	-99.5	-99.6
Japan	VF	31,192	31,882	4,116	2.2	-87.1	VF	-98.6	-98.3	-99.3	-51.1	-99.9	-99.7	-98.1	-98.9	-97.7
Korea (DPRK)		TF									
Korea (ROK)	VF	15,347	17,503	2,519	14.0	-85.6	VF				-46.9	-97.9	-95.7	-95.9	-96.3	-95.8
Macao (China)	TF	18,493	18,633	2,822	0.8	-84.9	TF	-63.1	-79.6	225.8	-67.9	-99.5	-94.7	-76.5	-79.1	-77.0
Mongolia	TF	529	577	59	9.1	-89.8	TF				-51.6	-94.9	-96.3	-94.5		
Taiwan (pr. of China)	VF	11,067	11,864	1,378	7.2	-88.4	VF	-97.7	-98.2	-96.5	-57.0	-99.6	-98.1	-98.0	-98.0	-97.9
South-East Asia	128,620	138,590	25,476	7.8	-81.6		-98.1	-98.1		-34.0	-98.2	-98.1	-98.0	-98.0	-97.9	-98.0
Brunei	TF	278	333	62	19.8	-81.3	TF	-98.9	-98.9		-25.4	-99.7	-99.3	-98.9	-99.5	-98.9
Cambodia	TF	6,201	6,611	1,306	6.6	-80.2	TF				-38.5	-98.1	-95.6	-96.7	-95.8	-97.0
Indonesia	TF	13,396	15,455	..	15.4	..	VF	-89.1	-89.1		-30.1	-87.9	-89.2	-87.7	-88.6	-86.3
Laos	TF	3,770	4,384	..	16.3	..	VF				-16.6	-100.0	-100.0	-100.0	-100.0	-100.0
Malaysia	TF	25,832	26,101	4,333	1.0	-83.4	TF				-36.8	-99.7	-99.3	-99.4	-99.4	-99.4
Myanmar	TF	3,551	4,364	..	22.9	..	TF				-28.3	-99.8	-99.2			
Philippines	TF	7,168	8,261	1,483	15.2	-82.1	TF				-36.6	-99.6	-98.3	-97.9	-98.4	-98.0
Singapore	TF	14,673	15,119	..	3.0	..	VF	-98.3	-98.6	-97.6	-43.2	-99.9	-99.5	-98.9	-99.1	-99.0
Thailand	TF	38,178	39,874	6,702	4.4	-83.2	TF	-99.8	-99.8	-99.7	-38.0	-100.0	-100.0	-99.9	-100.0	-99.9
Timor-Leste	TF	75	81	18	8.2	-77.9	VF				-17.8	-98.8	-91.6	-93.5		
Vietnam	VF	15,498	18,009	3,837	16.2	-78.7	VF	-99.1	-99.1	-99.1	-18.1	-98.6	-99.0	-99.1	-99.1	-99.0
Oceania	17,049	17,452	3,599	2.4	-79.4		-98.3	-98.3		-25.4	-99.2	-98.6	-98.5	-98.2	-98.5	-98.7
American Samoa	TF	20	20	..	-0.1	..	TF									
Australia	VF	9,246	9,466	1,828	2.4	-80.7	VF	-99.0	-99.0		-28.5	-99.5	-99.5	-99.2	-99.2	-99.1
Cook Islands	TF	169	172	25	1.7	-85.3	TF	-99.4	-99.4		-13.1	-99.8	-99.6	-99.5	-99.8	-99.4
Fiji	TF	870	894	147	2.8	-83.6	TF	-98.5	-98.5		-18.7	-99.2	-99.0	-98.8	-98.5	-98.7
French Polynesia	TF	216	237	77	9.4	-67.5	TF				-26.8	-100.0	-70.2	-66.3	-57.6	-76.6
Guam	TF	1,549	1,667	328	7.6	-80.3	TF	-97.1	-97.1		-28.2	-98.6	-98.5	-98.4	-98.3	-98.2
Kiribati	TF	7	8	..	11.3	..	VF									
Marshall Islands	TF	7	6	..	-10.3	..	TF*									
Micronesia FSM	TF	19	18	..	-6.3	..	TF									
New Caledonia	TF	120	130	..	8.4	..	TF				-7.3	-97.3	-91.6		-92.3	-92.5
New Zealand	TF	3,686	3,702	..	0.4	..	VF	-98.7	-98.7		-19.8	-99.0	-98.2	-98.6	-98.2	-98.6
Niue	TF	11	10	..	-2.9	..	TF									
N.Mariana Islands	VF	518	487	..	-5.9	..	VF				-21.4					
Palau	TF	106	94	18	-11.6	-80.5	TF				-30.6	-100.0	-99.4	-99.8	-99.8	-99.7
Papua New Guinea	TF	140	160	..	14.3	..	TF									
Samoa	TF	164	172	21	4.8	-87.9	VF				-36.2	-100.0	-100.0	-100.0	-100.0	-100.0
Solomon Islands	TF	28	29	..	3.7	..	TF				-32.2	-99.5	-98.8			
Tonga	TF	54	TF									
Tuvalu	TF	3	4	..	12.5	..	TF									
Vanuatu	TF	116	121	22	4.3	-81.8	TF				-2.0	-100.0	-100.0	-100.0	-100.0	-100.0
South Asia	31,658	34,032	7,843	7.5	-77.0		-93.0	-93.0		-22.2	-98.8	-96.8	-95.3	-95.2	-96.8	-94.1
Bangladesh	TF	267	323	..	21.0	..	TF									
Bhutan	TF	274	316	..	15.1	..	TF*				-37.3					
India	TF	17,427	17,910	..	2.8	..	TF				-22.6	-100.0				
Iran	VF	7,295	9,073	..	24.4	..	VF				-15.8	-96.1	-94.5		-92.2	
Maldives	TF	1,484	1,703	555	14.7	-67.4	TF	-46.9	-46.9		-20.7	-100.0	-95.1	-65.9	-84.8	-74.1
Nepal	TF	1,173	1,197	230	2.1	-80.8	TF	-89.9	-88.9	-90.7	-29.1	-99.9	-99.6	-97.7	-98.5	-98.5
Pakistan	TF	TF									
Sri Lanka	TF	2,334	1,914	508	-18.0	-73.5	TF	-98.8	-99.3	-98.4	-31.5	-100.0	-100.0	-99.9	-100.0	-100.0

Source: World Tourism Organization (UNWTO) ©

(Data as collected by UNWTO, March 2021)

See box in page 'Annex-1' for explanation of abbreviations and symbols used

* Provisional data

International Tourism Receipts by (sub)region and selected countries and territories of destination

Local currencies, current prices (% change over same period of previous year)

	(USD million)			Change (%)		2020*										
	2017	2018	2019*	18/17	19*/18	YTD	Q1	Q2	Q3	Q4	Aug.	Sep.	Oct.	Nov.	Dec.	
Asia and the Pacific	391,979	435,240	442,138													
North-East Asia	168,475	193,339	187,327													
China	38,559	40,386	35,832	2.5	-7.3	-56.4	-40.9	-57.0	-69.5							
Hong Kong (China)	33,339	36,866	29,043	11.2	-21.2	-90.4	-81.1	-97.0	-96.8	-89.9						
Japan	34,054	42,096	46,054	21.7	8.0	-77.1	-38.2	-90.3	-89.0	-88.0	-88.7	-87.7	-89.0	-87.4	-87.6	
Korea (DPRK)											
Korea (ROK)	13,368	18,567	20,867	\$ 38.9	12.4	-49.5	-31.2	-63.2	-49.5	-52.9	-50.0	-46.7	-51.0	-50.5	-56.9	
Macao (China)	35,921	40,707	40,060	14.0	-1.6	-82.7	-61.3	-96.4	-92.1							
Mongolia	396	445	513	\$ 12.5	15.3	-94.2	-58.3	-98.1	-98.8	-94.1	-98.9	-97.6	-95.6	-94.9	-89.9	
Taiwan (pr. of China)	12,315	13,704	14,411	\$ 11.3	5.2	-84.8	-59.8	-97.6	-96.1							
South-East Asia	126,144	138,239	147,604													
Brunei	177	190	217	\$ 7.2	13.9	-90.5	-73.0	-99.8	-99.8							
Cambodia	3,636	4,352	4,769	19.7	9.8	-73.2	-33.2	-97.1	-94.5							
Indonesia	13,139	16,426	16,911	\$ 25.0	3.0	-80.8	-28.3	-97.6	-97.9	-96.7						
Laos	648	811	935	\$ 25.1	15.3	-51.0	-4.1	-99.9								
Malaysia	18,357	19,622	19,823	0.3	3.7	-84.8	-39.9	-99.8	-99.4	-99.6						
Myanmar	1,969	1,652	2,483	\$ -16.1	50.3	-67.6	-42.0	-99.7								
Philippines	6,988	8,240	9,806	\$ 17.9	19.0	-74.1	-35.0	-96.0	-96.1		-96.2	-96.3				
Singapore	19,890	20,422	20,302	0.3	0.5	-74.1	-35.8	-86.7	-87.4	-85.2						
Thailand	52,376	56,366	60,521	2.5	1.9	-70.0	-35.8	-88.2	-92.5							
Timor-Leste	73	78	70	\$ 6.5	-9.2	-63.6	-5.0	-95.0	-71.2	-80.2						
Vietnam	8,890	10,080	11,792	\$ 13.4	17.0	-78.8	-18.6	-100.0	-96.7	-100.0						
Oceania	57,488	61,137	61,605													
Australia	41,747	45,035	45,709	10.7	9.1	-43.3	-19.1	-46.4	-55.2	-54.7	-57.4	-55.2	-54.6	-53.9	-55.4	
Cook Islands	229	233	..	4.5	..											
Fiji	940	972	963	4.4	2.6	-79.4	-17.3	-98.6	-99.0							
French Polynesia	511	642	..	20.2	..											
Guam											
Kiribati	4	3	..	\$ -14.3	..											
Marshall Islands	7	9	..	30.3	..											
Micronesia FSM											
New Caledonia											
New Zealand	10,604	10,875	10,500	5.3	1.4	-28.9	-3.2	-50.3	-50.4							
Niue	\$											
N.Mariana Islands											
Palau	116	\$											
Papua New Guinea	2	3	2	45.2	-14.9	-77.6	-62.4	-87.1	-68.8							
Samoa	166	192	207	17.3	10.0	-88.2	-31.9	-100.0	-100.0	-100.0	-100.0	-100.0	-100.0	-100.0	-100.0	
Solomon Islands	67	81	70	22.5	-11.4	-45.0	-45.0									
Tonga	48	48	57	\$ 0.1	17.9	-72.8	-45.0	-97.1								
Tuvalu											
Vanuatu	265	295	..	\$ 11.2	..											
South Asia	39,872	42,526	45,602													
Afghanistan	2	28	72	\$	-2.6	-21.2	10.7	-1.4							
Bangladesh	341	353	388	7.5	11.3	-43.9	-8.8	-66.0	-59.5	-44.9						
Bhutan	103	103	120	\$ -0.1	16.5	-35.9	-35.9									
India	27,365	28,568	30,720	9.6	10.8	-49.4	-7.1	-71.0	-72.1							
Iran	4,402	5,024	..	\$ 14.1	..											
Maldives	2,744	3,028	3,134	\$ 10.4	3.5											
Nepal	639	650	707	6.0	12.5	-71.2	-21.5	-74.3	-91.5	-92.3	-93.7	-93.0	-95.9	-95.0	-82.3	
Pakistan	352	391	494	\$ 11.1	26.6	-11.4	29.9	-38.8	-32.2	-7.8	-46.7	-13.1	-16.6	-4.1	-3.5	
Sri Lanka	3,925	4,381	3,607	\$ 11.6	-17.7	-69.7	-31.5	-100.0	-100.0		-100.0	-100.0	-100.0	-100.0		

Source: World Tourism Organization (UNWTO) ©

(Data as collected by UNWTO, March 2021)

See box in page 'Annex-1' for explanation of abbreviations and symbols used

* Provisional data

International Tourist Arrivals by (sub)region and selected countries and territories of destination

Series	(1000)					Percentage change over same period of previous year											
				Change (%)		2021*			2020*								
	2018	2019	2020*	19/18	20*/19	Series	YTD	Jan.	Feb.	Q1	Q2	Q3	Q4	Oct.	Nov.	Dec.	
Americas	216,032	219,284	68,336	1.5	-68.8		-76.9	-76.9		-16.9	-92.7	-86.2	-76.5	-79.4	-76.6	-73.9	
North America	142,192	146,611	46,721	3.1	-68.1		-71.3	-71.3		-14.7	-90.3	-84.2	-72.9	-76.1	-72.3	-70.5	
Canada	TF	21,134	22,145	2,960	4.8	-86.6	TF	-93.8	-93.8		-19.6	-98.3	-97.5	-94.9	-96.2	-94.3	-94.0
Mexico	TF	41,313	45,024	24,316	9.0	-46.0	TF	-49.3	-49.3		-6.7	-75.9	-57.5	-44.5	-43.7	-45.6	-44.3
United States	TF	79,746	79,442	19,445	-0.4	-75.5	TF				-19.0	-95.8	-91.6	-85.8	-88.8	-85.1	-83.4
Caribbean	25,825	26,328	8,948	1.9	-66.0		-75.7	-75.7		-23.6	-96.6	-79.6	-72.1	-74.1	-76.0	-67.7	
Anguilla	TF	55	95	25	74.9	-73.4	TF	-89.2	-89.2		-23.0	-99.9	-99.6	-89.7	-95.2	-91.8	-86.6
Antigua & Barbuda	TF	269	301	125	11.9	-58.4	TF	-80.0	-76.8	-83.1	-8.2	-96.2	-77.3	-68.6	-65.3	-77.8	-63.8
Aruba	TF	1,082	1,119	368	3.4	-67.1	TF	-65.9	-65.4	-66.4	-22.2	-100.0	-83.5	-65.0	-72.4	-67.0	-57.4
Bahamas	TF	1,624	1,804	446	11.1	-75.3	TF	-86.7	-86.4	-86.9	-27.8	-99.3	-91.5	-91.2	-91.8	-94.0	-88.8
Barbados	TF	680	TF				-24.2	-99.4					
Bermuda	TF	282	269	42	-4.4	-84.4	TF				-37.7	-100.0	-90.7	-81.2	-78.5	-83.0	-83.5
Bonaire	TF	TF										
Brit. Virgin Islands	TF	192	302	83	57.3	-72.7	TF				-7.9	-100.0	-100.0	-97.6	-100.0	-100.0	-95.1
Cayman Islands	TF	463	503	122	8.6	-75.8	TF				-18.8	-99.6	-99.3	-98.1	-98.0	-98.1	-98.2
Cuba	TF	4,684	4,263	..	-9.0	..	VF	-95.5	-94.3	-96.7	-33.2	-99.7	-99.4	-89.9	-98.6	-91.6	-82.9
Curaçao	TF	432	464	175	7.4	-62.3	TF	-87.3	-87.3		-14.7	-98.8	-74.4	-68.3	-60.7	-64.1	-77.7
Dominica	TF	63	90	22	42.5	-75.8	TF				-21.5	-99.7	-95.0	-91.1	-94.8	-86.2	-89.5
Dominican Rep.	TF	6,569	6,446	2,405	-1.9	-62.7	TF	-63.2	-63.2		-25.8	-99.9	-75.3	-54.6	-62.8	-62.1	-44.2
Grenada	TF	186	188	..	1.1	..	TF	-95.7	-94.8	-96.6	-17.5	-99.9	-97.6	-85.7	-84.2	-84.9	-87.4
Guadeloupe	TCE	735	THS										
Haiti	TF	447	286	..	-36.1	..	TF										
Jamaica	TF	2,473	2,681	880	8.4	-67.2	TF	-80.7	-80.7		-18.9	-98.9	-81.8	-72.0	-74.4	-75.6	-67.9
Martinique	TF	537	556	312	3.5	-43.9	TF				-10.6	-90.5	-41.6	-51.7	-36.2	-69.8	-48.7
Montserrat	TF	10	10	5	1.7	-56.3	TF				-4.7	-99.4	-90.9	-89.4	-90.5	-90.1	-88.5
Neth. Antilles	TF	TF										
Puerto Rico	TF	3,068	3,180	..	3.6	..	THS				-16.3	-84.2	-57.6	-77.9	-66.0	-77.7	-86.4
Saba	TF	TF										
Saint Lucia	TF	396	424	131	7.1	-69.2	TF	-84.7	-81.1	-87.7	-20.1	-100.0	-90.7	-71.0	-71.0	-76.4	-67.0
St. Eustatius	TF	TF										
St. Kitts & Nevis	TF	123	120	30	-2.2	-75.3	TF				-32.2	-100.0	-97.9	-94.4	-98.5	-95.0	-91.6
St. Maarten	TF	178	320	106	80.0	-66.7	TF(1)	-60.3	-60.3		-13.4	-99.5	-90.4	-68.2	-79.7	-73.1	-55.2
St. Vincent & Gren.	TF	80	85	26	6.5	-69.3	TF				-17.0	-99.4	-87.2	-80.2	-80.3	-80.3	-80.1
Trinidad & Tobago	TF	375	389	..	3.5	..	TF				-12.4	-99.6					
Turks & Caicos	TF	441	487	..	10.4	..	TF				-13.3		-89.8				
US Virgin Islands	TF	381	VF(1)	-40.3	-40.3		-9.4	-79.6	-36.8	-18.7	-9.7	-20.2	-21.6
Central America	10,845	10,932	2,936	0.8	-73.1		-80.2	-80.2		-17.5	-98.2	-98.8	-86.8	-93.6	-85.7	-83.4	
Belize	TF	489	503	144	2.8	-71.3	TF				-22.1	-98.9	-97.9	-85.6	-87.5	-87.5	-83.5
Costa Rica	TF	3,017	3,139	1,012	4.1	-67.8	TF	-83.2	-82.7	-83.8	-14.0	-97.3	-98.9	-83.8	-94.5	-84.7	-77.1
El Salvador	TF	1,677	1,766	..	5.3	..	TF				-16.0	-100.0					
Guatemala	TF	1,781	1,752	396	-1.6	-77.4	TF	-74.5	-74.5		-23.9	-100.0	-99.6	-88.5	-95.8	-80.1	-90.2
Honduras	TF	847	724	204	-14.5	-71.9	TF				-7.7	-100.0	-95.2	-79.1	-77.1	-85.8	-75.6
Nicaragua	TF	1,256	1,295	..	3.2	..	TF				9.0	-92.1					
Panama	TF	1,779	1,753	414	-1.5	-76.4	TF				-35.8	-100.0	-100.0	-84.3	-89.2	-80.6	-83.4
South America	37,169	35,412	9,730	-4.7	-72.5		-92.1	-92.1		-18.2	-98.9	-97.5	-90.9	-94.2	-92.1	-87.7	
Argentina	TF	6,942	7,399	2,090	6.6	-71.8	TF	-97.5	-97.5		-8.9	-100.0	-99.5	-98.3	-99.1	-98.4	-97.7
Bolivia	TF	1,142	1,239	323	8.5	-73.9	THS	-90.7	-90.7		-16.8	-98.8	-98.7	-90.1	-93.0	-92.2	-86.1
Brazil	TF	6,621	6,353	..	-4.1	..	TF										
Chile	TF	5,723	4,518	1,123	-21.1	-75.1	TF	-94.6	-94.6		-29.0	-100.0	-100.0	-95.6	-100.0	-96.6	-91.7
Colombia	TF	4,020	4,169	1,250	3.7	-70.0	TF				-12.9	-99.3	-98.1	-71.5	-82.1	-74.0	-62.8
Ecuador	VF	2,535	2,108	507	-16.9	-75.9	VF	-77.8	-78.2	-77.4	-31.4	-98.8	-92.4	-71.6	-74.2	-73.5	-68.9
French Guiana	TF	TF										
Guyana	TF	287	315	87	9.8	-72.5	TF				-8.0	-98.9	-94.7	-76.7	-90.0	-75.9	-66.5
Paraguay	TF	1,181	1,216	252	2.9	-79.3	TF	-94.3	-94.7	-93.7	-28.2	-100.0	-100.0	-96.6	-99.3	-96.9	-94.5
Peru	TF	4,419	4,372	897	-1.1	-79.5	TF	-97.6	-96.8	-98.3	-23.3	-100.0	-100.0	-95.2	-98.6	-96.6	-90.4
Suriname	TF	TF										
Uruguay	TF	3,469	3,056	..	-11.9	..	TF				-9.8	-100.0					
Venezuela	TF	403	260	..	-35.5	..	TF										

Source: World Tourism Organization (UNWTO) ©

(Data as collected by UNWTO, March 2021)

See box in page 'Annex-1' for explanation of abbreviations and symbols used

* Provisional data

International Tourism Receipts by (sub)region and selected countries and territories of destination

Local currencies, current prices (% change over same period of previous year)

	(USD million)			Change (%)		2020*										
	2017	2018	2019*	18/17	19*/18	YTD	Q1	Q2	Q3	Q4	Aug.	Sep.	Oct.	Nov.	Dec.	
Americas	313,079	320,935	322,615													
North America	240,168	245,910	245,900													
Canada	24,998	26,919	28,012		7.5	6.5	-59.4	-5.2	-69.1	-88.0	-62.7					
Mexico	21,336	22,526	24,573	\$	5.6	9.1	-55.1	-14.6	-91.4	-70.8	-51.9	-73.7	-56.7	-53.4	-54.8	-48.8
United States	193,834	196,465	193,315	sa	1.4	-1.6	-60.6	-19.7	-73.6	-76.7	-72.7	-77.1	-75.8	-75.0	-72.3	-70.9
Caribbean	31,798	33,027	35,317													
Anguilla	138	108	163		-21.6	51.3	-69.0	-21.6	-99.9	-100.0						
Antigua & Barbuda	607	641	776		5.6	21.1	-56.9	-7.7	-94.6	-76.4	-67.8	-72.1	-73.4	-65.4	-75.7	-63.4
Aruba	1,855	2,025	2,091		9.2	3.2	-48.3	-6.7	-82.4	-68.5						
Bahamas	2,930	3,728	4,126		27.2	10.7	-69.5	-13.0	-99.5	-97.8						
Barbados	1,081	1,140	1,269		5.5	11.2	-54.8	-10.6	-88.6	-81.5	-68.1					
Bermuda	508	585	600		15.2	2.6	-79.8	-27.1	-94.4							
Bonaire										
Brit. Virgin Islands	\$										
Cayman Islands	793	871	919		9.9	5.4										
Cuba	3,186	2,903	2,596		-8.9	-10.6										
Curaçao	551	593	703		7.7	18.6	-57.9	-12.9	-99.2	-72.5						
Dominica	75	82	105		8.4	29.1	-71.9	-18.9	-97.5	-92.9	-89.5	-92.6	-83.5	-93.1	-85.5	-88.1
Dominican Rep.	7,184	7,561	7,468	\$	5.2	-1.2	-65.2	-25.5	-98.4	-78.9						
Grenada	151	199	170		31.8	-14.7	-63.3	-5.4	-99.9	-96.6		-96.1	-94.6	-75.6		
Guadeloupe	..	860										
Haiti	459	620	450	\$	35.0	-27.4	-56.3	-56.3								
Jamaica	2,809	3,099	3,599	\$	10.3	16.1	-55.8	-19.2	-98.0							
Martinique	480	533	549		6.2	8.7										
Montserrat	9	10	10		5.6	0.1	-48.6	1.0	-99.5	-90.5	-88.1	-87.9	-87.7	-88.8	-89.0	-87.3
Neth. Antilles										
Puerto Rico	3,848	3,282	3,612	\$	-14.7	10.1										
Saba										
Saint Lucia	837	901	999		7.5	10.9	-68.2	-24.5	-100.0	-90.2	-68.7	-90.0	-80.4	-68	-76	-64
St. Eustatius										
St. Kitts & Nevis	160	196	189		22.6	-3.6	-75.9	-37.3	-100.0	-98.2	-96.1	-99.4	-95.4	-98.9	-96.5	-94.3
St. Maarten	630	453	682		-28.1	50.5	-56.4	0.7	-99.8	-96.3						
St. Vincent & Gren.	95	104	118		9.8	12.6	-62.8	-8.1	-99.3	-84.3	-80.9	-78.0	-80.0	-78.9	-81.3	-81.4
Trinidad & Tobago	453	429	437	\$	-5.3	1.8	-58.9	-10.0	-95.6	-95.7						
Turks & Caicos	571	787	..		37.8	..										
US Virgin Islands	1,202	1,046	..		-13.0	..										
Central America	12,003	12,245	12,628													
Belize	397	487	510		22.8	4.8	-41.6	-13.7	-78.5							
Costa Rica	3,656	3,769	4,008	\$	3.1	6.3	-58.3	-6.7	-98.2	-99.3						
El Salvador	873	1,014	1,306	\$	16.1	28.8	-63.4	-15.9	-95.7	-92.2						
Guatemala	1,213	1,231	1,221	\$	1.5	-0.8	-74.9	-32.5	-99.5	-99.3						
Honduras	603	592	547	\$	-1.8	-7.6	-67.8	-15.0	-92.5	-91.9						
Nicaragua	841	544	515	\$	-35.2	-5.3	-52.9	39.4	-95.4	-95.0						
Panama	4,422	4,617	4,521		4.4	-2.1	-75.3	-35.9	-100.0	-100.0						
South America	29,109	29,753	28,771													
Argentina	5,370	5,563	5,241	\$	3.6	-5.8	-58.7	-14.6	-94.0	-94.0						
Bolivia	803	815	797	\$	1.6	-2.3	-71.1	-19.7	-98.8	-98.7						
Brazil	5,809	5,921	5,995	\$	1.9	1.2	-49.2	-15.2	-68.8	-69.3	-54.4	-68.7	-59.0	-60.8	-59.3	-44.8
Chile	3,131	2,871	2,377	\$	-8.3	-17.2	-78.7	-49.8	-99.8	-99.7						
Colombia	4,921	5,556	5,652	\$	12.9	1.7	-67.0	-16.6	-96.0	-97.3						
Ecuador	2,012	2,272	2,282	\$	12.9	0.4	-70.0	-17.9	-98.4	-88.5						
French Guiana										
Guyana	95	28	27	\$	-71	-2	-34.3	-29.4	-42.0							
Paraguay	369	363	379	\$	-1.7	4.4	-55.5	-28.0	-79.7	-56.2						
Peru	3,576	3,557	3,738	\$	-0.5	5.1	-79.2	-20.3	-97.9	-98.0	-94.7					
Suriname	46	56	53	\$	21.6	-6.7	-70.5	-40.4	-86.3	-90.7	-80.5					
Uruguay	2,559	2,350	2,011	\$	-8.2	-14.4	-33.2	-16.3	-82.3							
Venezuela	\$										

Source: World Tourism Organization (UNWTO) ©

See box in page 'Annex-1' for explanation of abbreviations and symbols used

(Data as collected by UNWTO, March 2021)

* Provisional data

International Tourist Arrivals by (sub)region and selected countries and territories of destination

Series	(1000)					Percentage change over same period of previous year											
				Change (%)		2021*			2020*								
	2018	2019	2020*	19/18	20*/19	Series	YTD	Jan.	Feb.	Q1	Q2	Q3	Q4	Oct.	Nov.	Dec.	
Africa	68,672	70,042	18,392	2.0	-73.7		-84.8	-84.8		-13.1	-90.6	-86.6	-78.3	-80.9	-79.7	-74.7	
North Africa	24,081	25,622	5,542	6.4	-78.4		-79.7	-79.7		-20.4	-99.3	-91.8	-83.8	-86.6	-86.7	-78.7	
Algeria	VF	2,657	2,371	..	-10.8	..	VF										
Morocco	TF	12,289	12,932	2,778	5.2	-78.5	TF			-21.6	-99.7	-94.9	-79.8	-83.4	-82.6	-73.9	
Sudan	TF	836	TF										
Tunisia	TF	8,299	9,429	2,012	13.6	-78.7	TF	-80.8	-75.6	-85.8	-17.1	-99.1	-87.8	-87.5	-90.2	-91.0	-82.9
Subsaharan Africa	44,591	44,421	12,850	-0.4	-71.1		-86.9	-86.9		-9.8	-85.3	-82.2	-75.4	-77.7	-76.4	-72.7	
Angola	TF	218	218	..	0.0	..	TF										
Benin	TF	295	309	..	4.7	..	TF										
Botswana	TF	1,655	TF										
Burkina Faso	THS	144	143	..	-0.7	..	THS										
Burundi	TF	TF										
Cameroon	TF	THS										
Cabo Verde	THS	710	758	180	6.8	-76.3	THS			-19.9	-99.3	-99.5	-99.1				
Centr. African Rep.	TF	109	TF										
Chad	THS	THS										
Comoros	TF	36	45	..	25.6	..	TF										
Congo	THS	156	THS										
Côte d'Ivoire	VF	1,965	2,070	..	5.3	..	TF										
Dem. Rep. Congo	TF	TF										
Djibouti	TF	NHS										
Equatorial Guinea	TF	TF										
Eritrea	VF	VF										
Eswatini	TF	782	680	..	-13.0	..	VF	-84.4	-82.1	-87.1	-9.5	-94.3	-92.3	-80.8	-85.1	-76.9	-79.7
Ethiopia	TF	849	812	271	-4.4	-66.7	TF				-34.8	-96.6	-79.1	-51.3	-54.8	-55.9	-43.1
Gabon	TF	TF										
Gambia	TF	552	619	..	12.1	..	TF				-11.3	-99.5	-94.8	-81.6	-90.6	-82.6	-76.1
Ghana	TF	1,029	1,093	..	6.2	..	TF				-10.6	-98.1	-89.3				
Guinea	TF	TF										
Guinea-Bissau	TF	55	52	..	-4.7	..	TF										
Kenya	TF	1,931	1,863	..	-3.5	..	VF(1)				-19.4	-99.5	-92.4	-71.7	-76.6	-74.3	-64.7
Lesotho	TF	VF										
Liberia	TF	TF										
Madagascar	TF	291	384	68	32.0	-82.2	TF				-42.8	-100.0	-100.0	-95.4	-91.3	-97.9	-95.6
Malawi	TF	871	TF										
Mali	TF	203	217	..	6.9	..	TF										
Mauritania	TF	TF										
Mauritius	TF	1,399	1,383	309	-1.1	-77.7	TF	-99.0	-99.1	-98.9	-13.5	-100.0	-99.8	-99.2	-99.1	-99.1	-99.3
Mozambique	TF	2,743	2,019	..	-26.4	..	THS										
Namibia	TF	1,557	1,596	..	2.5	..	TF										
Niger	TF	157	192	..	22.3	..	TF										
Nigeria	TF	TF										
Reunion	TF	535	534	217	-0.2	-59.4	TF				-6.5	-96.9	-69.4	-66.9	-52.8	-72.9	-73.0
Rwanda	TF	1,619	1,544	..	-4.6	..	VF										
São Tomé & Príncipe	TF	33	TF										
Senegal	TF	TF*										
Seychelles	TF	362	384	115	6.2	-70.1	TF	-97.4	-96.6	-98.1	-12.4	-99.7	-95.3	-80.3	-90.9	-82.9	-68.1
Sierra Leone	TF	57	63	..	10.5	..	TF										
Somalia	TF	TF										
South Africa	TF	10,472	10,229	2,802	-2.3	-72.6	TF				-10.2	-100.0	-100.0	-86.0	-91.1	-88.1	-79.8
Tanzania	TF	1,378	1,443	..	4.7	..	VF										
Togo	THS	573	876	..	52.9	..	THS										
Uganda	TF	1,505	TF										
Zambia	TF	1,072	1,266	..	18.1	..	TF										
Zimbabwe	VF	2,567	2,290	..	-10.8	..	VF										

Source: World Tourism Organization (UNWTO) ©

(Data as collected by UNWTO, March 2021)

See box in page 'Annex-1' for explanation of abbreviations and symbols used

* Provisional data

International Tourism Receipts by (sub)region and selected countries and territories of destination

Local currencies, current prices (% change over same period of previous year)

	(USD million)			Change (%)		2020*										
	2017	2018	2019*	18/17	19*/18	YTD	Q1	Q2	Q3	Q4	Aug.	Sep.	Oct.	Nov.	Dec.	
Africa	36,368	38,778	39,024													
North Africa	9,917	10,735	11,239													
Algeria	141	168	112	\$	19.4	-33.3	-62.7	-46.1	-78.2	-66.0						
Morocco	7,442	7,782	8,189		1.3	7.8	-53.8	2.3	-67.5	-92.6	-35.3	-96.7	-89.1	-66.9	-28.8	-4.8
Sudan	1,029	1,043	821	\$	1.4	-21.3	-19.6	-6.2	-99.3	-6.0						
Tunisia	1,305	1,741	2,116		46.0	34.7	-62.0	2.9	-83.9	-69.2	-76.2					
Subsaharan Africa	26,451	28,044	27,786													
Angola	880	544	384	\$	-38.2	-29.4	-97.0	-95.8	-97.9	-98.2						
Benin	150	162	240		3.5	55.6										
Botswana	704	582	571		-18.5	3.5										
Burkina Faso	117	121	116		-1.3	1.5										
Burundi	3	4	2		34.3	-35.9										
Cameroon	525	581	653	\$	10.7	12.5										
Cabo Verde	431	484	502		7.4	9.3	-59.9	-11.0	-91.0	-92.4						
Centr. African Rep.										
Chad										
Comoros	60	73	72		17.7	3.3										
Congo										
Côte d'Ivoire	397	443	..		6.7	..										
Dem. Rep. Congo	6.0	60.5	99.7	\$	27.7	27.7								
Djibouti	33	33	63		0.0	88.5										
Equatorial Guinea										
Eritrea										
Eswatini	13	16	14	\$	26.8	-12.2										
Ethiopia	435	969	781	\$	122.5	-19.4	29.0	1.9	27.7	56.9						
Gabon										
Gambia	103	154	..	\$	49	..										
Ghana	850	944	1,425	\$	11.1	51.0										
Guinea	16	3	9	\$	-79.0	173.5										
Guinea-Bissau	16	20	..		16.2	..										
Kenya	940	1,072	1,008	\$	14.0	-6.0	-46.8	-4.3	-88.8	-45.1						
Lesotho	23	24	21	\$	3.2	-11.9	-69.3	-6.1	-99.3	-99.0						
Liberia	2	\$										
Madagascar	671	697	747	\$	3.9	7.3	-63	-31.4	-99.8							
Malawi	31	38	42		21.0	14.7										
Mali	206	227	..		5.4	..										
Mauritania	22	4	11	\$	-81.1	163.0										
Mauritius	1,748	1,887	1,779		6.3	-1.5	-69.2	-14.4	-86.7	-94.1	-95.9	-95.1	-95.9	-95.7		
Mozambique	151	242	252	\$	60.7	4.3	-64.3	-26.1	-87.8	-86.4	-69.9					
Namibia	341	383	350		11.6	-0.3	-56.7	-1.5	-69.7	-83.5						
Niger	83	98	116		13.7	23.8										
Nigeria	2,549	1,962	1,449	\$	-23	-26	-82.5	-67.2	-100.0	-85.3						
Reunion	402	511	459	€	21.6	-5.2										
Rwanda	381	392	458	\$	2.9	16.8	-59.8	-14.5	-99.1							
São Tomé & Príncipe	66	72	44	\$	9.1	-38.1	-65.4	-23.1	-99.6	-70.5						
Senegal	420	496	..		13.0	..										
Seychelles	483	559	590	\$	15.7	5.5	-57.7	0.8	-97.3	-77.6						
Sierra Leone	39	39	43	\$	-0.3	9.8										
Somalia										
South Africa	8,824	8,944	8,384	sa	0.7	2.3	-64.1	-9.7	-91.9	-90.6						
Tanzania	2,250	2,449	2,605	\$	8.8	6.3	-62.1	-0.9	-92.5	-84.2	-83.7	-79.6	-74.8			
Togo	138	153	..		6.1	..										
Uganda	941	1,506	1,463	\$	60.1	-2.8	-67.6	-15.0	-100.0	-86.1						
Zambia	653	742	819	\$	13.7	10.4	-52.1	5.1	-76.0	-80.6						
Zimbabwe	149	\$										

Source: World Tourism Organization (UNWTO) ©

(Data as collected by UNWTO, March 2021)

See box in page 'Annex-1' for explanation of abbreviations and symbols used

* Provisional data

International Tourist Arrivals by (sub)region and selected countries and territories of destination

Series	(1000)			Change (%)		Percentage change over same period of previous year											
	2018	2019	2020*	19/18	20*/19	Series	2021*			2020*							
							YTD	Jan.	Feb.	Q1	Q2	Q3	Q4	Oct.	Nov.	Dec.	
Middle East	65,500	69,969	18,179	6.8	-74.0		-83.6	-83.6		-20.0	-98.9	-92.9	-85.7	-86.9	-85.7	-84.7	
Bahrain	TCE	4,366	3,849	..	-11.8	..	VF				-40.5	-98.2	-96.8				
Egypt	VF	11,346	13,026	..	14.8	..	VF				-19.6	-99.8					
Iraq	VF	VF										
Jordan	TF	4,150	4,488	..	8.1	..	TF										
Kuwait	THS	200	THS										
Lebanon	TF	1,964	1,936	..	-1.4	..	TF				-48.3						
Libya	TF	TF										
Oman	TF	2,301	2,500	..	8.6	..	VF	-88.9	-88.9		-11.8	-99.5	-98.5	-94.1	-97.4	-95.7	-90.6
Palestine	THS	606	688	..	13.5	..	THS										
Qatar	TF	1,819	2,137	582	17.4	-72.8	TF	-95.0	-95.0		-7.1	-99.5	-97.9	-96.4	-95.8	-96.1	-96.9
Saudi Arabia	TF	15,334	17,526	4,138	14.3	-76.4	TF	-89.2	-88.2	-90.3	-28.1	-98.2	-95.3	-88.9	-87.0	-87.1	-91.5
Syria	TF	VF				-21.8	-98.1	-97.0		-92.7		
Utd Arab Emirates	TF	21,286	21,553	7,165	1.3	-66.8	TF	-73.5	-74.2	-72.7	-12.3	-99.0	-89.9	-72.6	-74.9	-74.5	-69.0
Yemen	TF	TF										

Source: World Tourism Organization (UNWTO) ©

(Data as collected by UNWTO, March 2021)

See box in page 'Annex-1' for explanation of abbreviations and symbols used

* Provisional data

International Tourism Receipts by (sub)region and selected countries and territories of destination

Series	(USD million)			Change (%)		Local currencies, current prices (% change over same period of previous year)											
	2017	2018	2019*	18/17	19*/18	Series	2020*			2020*							
							YTD	Q1	Q2	Q3	Q4	Aug.	Sep.	Oct.	Nov.	Dec.	
Middle East	67,943	75,215	90,437														
Bahrain	3,642	4,339	3,681	\$	19.1	-15.2											
Egypt	7,775	11,615	13,030	\$	49.4	12.2	-67.2	-11.4	-90.4					-88.0			
Iraq	2,959	1,986	3,593	\$	-32.9	80.9	-68.4	1.4	-94.4	-93.1							
Jordan	4,639	5,249	5,786		13.2	10.2	-72.5	-10.7	-98.4	-94.9							
Kuwait	313	456	700		45.1	54.1	-38.7	-1.8	-76.9								
Lebanon	7,610	8,400	8,593	\$	10.4	2.3	-67.8	-42.5	-87.7								
Libya											
Oman	1,747	1,758	1,811		0.6	3.0											
Palestine	241	301	323	\$	24.9	7.3											
Qatar	5,971	5,565	5,442		-6.8	-2.2	-35.8	-13.8	-60.5	-34.5							
Saudi Arabia	12,056	13,790	16,382		14.4	19.2	-72.0	-15.4	-98.2	-96.6							
Syria											
Utd Arab Emirates	21,048	21,375	30,731		1.6	43.8											
Yemen	\$											

Source: World Tourism Organization (UNWTO) ©

(Data as collected by UNWTO, March 2021)

See box in page 'Annex-1' for explanation of abbreviations and symbols used

* Provisional data

Methodological Notes

About the data

The monthly and quarterly statistics included in this issue have been compiled by the UNWTO Secretariat based on preliminary data reported by the institutions of the various countries and territories (e.g. National Tourism Authorities, Statistics Offices, Central Banks) through websites, news releases and bulletins, or provided through direct contacts with officials or through international organisations such as the Caribbean Tourism Organization (CTO), the European Travel Commission (ETC), Eurostat, the Pacific Asia Travel Association (PATA) or the South Pacific Tourism Organization (SPTO).

Information in this issue reflects data available at the time of publication. Data may be updated or revised without notice in future issues of the *UNWTO World Tourism Barometer* as it becomes available.

Countries that are not included, but which have monthly data at their disposal, are kindly requested to contact the UNWTO Secretariat at barom@unwto.org.

For major concepts, definitions and classifications in the measurement of tourism, please see the International Recommendations for Tourism Statistics 2008 (IRTS 2008) at www.unwto.org/methodology.

International Tourist Arrivals data

In the tables on International Tourist Arrivals for the various UNWTO regions, series are chosen that can serve as an indicator of trends in selected destinations.

The monthly series represented do not always coincide with the annual series usually reported for the various countries (e.g. visitor arrivals or nights instead of tourist arrivals) and sometimes only relate to a part of the total tourism flow (e.g. air traffic, specific entry points). See 'Explanation of abbreviations and symbols used' for more detailed information.

The (sub)regional totals are approximations for the whole (sub)region prepared by UNWTO based on trends in the countries with data available.

Data series for international tourist arrivals reported by France correspond to Metropolitan France.

Starting in this issue, data on international tourist arrivals for the United Arab Emirates (UAE) has been changed from Dubai only, to the entire UAE.

International Tourism Receipts and Expenditure data

For destination countries, receipts from international tourism count as exports in the balance of payments (travel) of each country and cover all transactions related to the consumption of goods and services by international visitors, such as

accommodation, food and drink, fuel, domestic transport, entertainment, shopping, etc.

They include transactions generated by same-day as well as overnight visitors. Receipts from same-day visitors can be substantial, especially in the case of neighbouring countries where shopping accounts for a large amount of spending by cross-border, same-day visitors.

International tourism receipts (travel) do not include receipts from international passenger transport contracted from companies outside the travellers' countries of residence, which are reported in a separate category (passenger transport).

For the (sub)regional totals, estimates are made by UNWTO for countries that have not yet reported results, based on the previous year's value and the trend for the (sub)region. Unlike arrivals, where revisions generally more or less balance out, receipts data tends to be revised upwards.

It should be noted that data as reflected by UNWTO on international tourism receipts and expenditure for China is based on the balance of payments (BOP) travel credit and debit (as with other countries for reasons of consistency and international comparability) reported by the State Administration of Foreign Exchange (SAFE) at www.safe.gov.cn/en/BalanceofPayments/index.html.

In addition, according to the International Recommendations for Tourism Statistics 2008 (IRTS 2008), the balance of payments includes both business and personal purposes in the "travel" item. Business travel covers goods and services acquired by persons going abroad for all types of business activities. Personal travel covers goods and services acquired by persons going abroad for purposes other than business, such as vacations, participation in recreational and cultural activities, visits with friends and relations, pilgrimages, and education and health-related purposes. The "travel" item does not include international passenger transport, which is reported in a separate category in the BOP, under "transport". For more information, please see the International Recommendations for Tourism Statistics 2008 (IRTS 2008) at: www.unwto.org/methodology and the IMF Balance of Payments and International Investment Position Manual (BPM6) at www.imf.org/external/pubs/ft/bop/2007/bopman6.htm.

It should also be noted that there is a difference in the data of UNWTO and those produced by the Ministry of Culture and Tourism of China (formerly the China National Tourism Administration) for 2014 and subsequent years.

Ranking of International Tourism Receipts and Expenditure

It should be noted that changes in the ranking of international tourism receipts not only reflect relative performance of the destinations, but also exchange rate fluctuations of the local currencies against the US dollar.

Conversely, changes in the ranking of international tourism expenditure do not only reflect variations in spending on outbound travel, relative to other countries, but also changes in the value of the local currency compared to the US dollar.

In 2018 exchange rate movements were generally moderate, with the US dollar depreciating by 4% against the Euro. The US dollar-euro exchange rate moved from an average of 0.885 euro per US dollar in 2017 to 0.847 in 2018. Thus, the effect of converting tourism receipts earned in euros (by Euro area destinations) to US dollars was relatively small. The US dollar also depreciated by 3% against the UK pound and by 2% against the Chinese yuan and Japanese yen, among others. In these destinations tourism receipts expressed in US dollars were higher due to the exchange rates, though to a small extent. The US dollar however, did appreciate to different extents versus the currencies of large emerging markets, such as Brazil, Russia, and India, and quite sharply versus the Argentine peso due to the economic crisis in that country.

Exchange rates and inflation

With financial data measured in different currencies it is complicated to accurately determine variations in relative terms, as receipts have to be expressed in a common currency like the US dollar or the euro and generally are also reported at current prices, thus not taking account of exchange rate fluctuations and inflation.

Exchange rate changes can substantially influence the values in US dollars reported from year to year. When the dollar appreciates against for instance the euro, worldwide receipts expressed in dollars relatively decrease, and vice versa in the case the dollar depreciates.

Exchange rate US\$ to euro and vice versa, average for the year

Year	USD to EUR	Change (%)	EUR to USD	Change (%)
2010	0.7543	5.2	1.3257	-5.0
2011	0.7184	-4.8	1.3920	5.0
2012	0.7783	8.3	1.2848	-7.7
2013	0.7530	-3.3	1.3281	3.4
2014	0.7527	0.0	1.3285	0.0
2015	0.9013	19.7	1.1095	-16.5
2016	0.9034	0.2	1.1069	-0.2
2017	0.8852	-2.0	1.1297	2.1
2018	0.8467	-4.3	1.1810	4.5
2019	0.8933	5.5	1.1195	-5.2

Note: Exchange rates are yearly averages. Source: Compiled from Eurostat

In order to account for exchange rate changes and inflation, international tourism receipts expressed in US dollar values (for reason of comparison) were converted back to the local currencies of each destination, weighted by the share in the total, and deflated by the relevant rate of inflation.